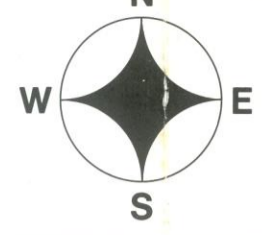
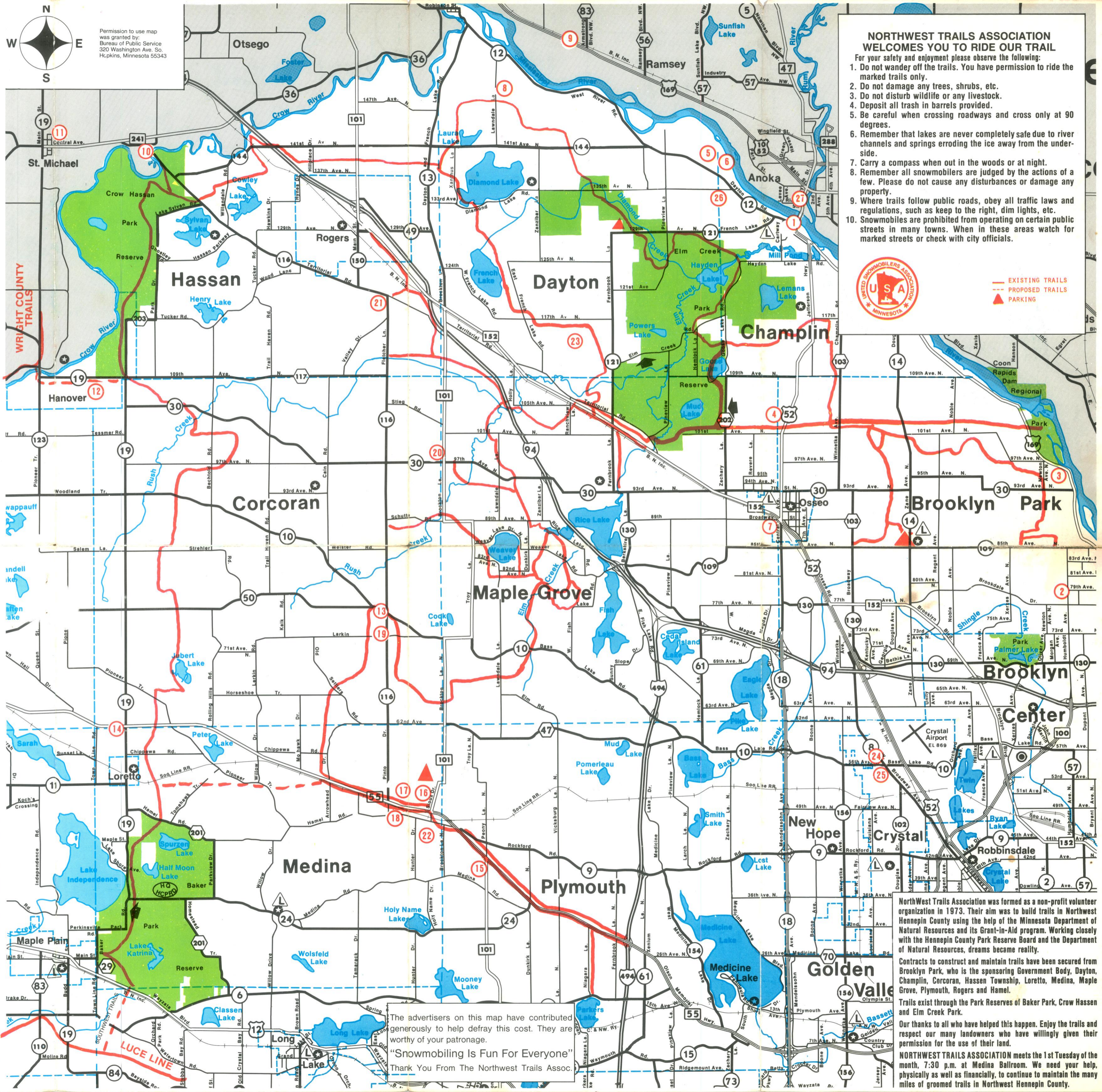


CHAMPLIN TOM THUMB 508 HWY CHAMPLIN, MN. 421-8950 <small>A Convenience Store, With a Whole Lot More!</small>	Snowmobilers Unite at Pixie Liquors 1512 Brookdale Drive Your Friendly Liquor Store PHONE 560-5680 <small>We have your warm weather products!</small>
M G BOTTLE SHOP SNOWMOBILERS WELCOME LANCASTER LANE 9-8 Monday-Thursday 8-10 Friday & Saturday OSSEO 425-8171	RIVER HOUSE SUPPER CLUB & BOTTLE SHOP ON-OFF SALE DANCING FRI-SAT 9-1 9510 W. River Road Call 425-3980 for Reservation
Rain Tree Liquors IN RAIN TREE PLAZA BEER - WINES - LIQUORS Park and Ride From Here! CHAMPLIN 421-3180	PDO FOOD STORES GAS - OIL - HOT SANDWICHES - COFFEE - POP - BEER Video Games Open 6:30-11 7 days RAINTREE PLAZA
NORTHWEST TRAIL ASSOCIATION P.O. BOX 344 OSSEO, MN. 55369	OSSEO MEAT MARKET The Old Fashioned Meat Market with the Personal Touch! 101 Central 425-2215 HOME MADE SAUSAGE
DAYTONA GOLF TENNIS RACQUETBALL CLUB DAYTON 427-6110	HI-10 SPORTS NEW & USED PARTS & ACCESSORIES 8110 Highway 10, Anoka, MN 55303 We buy used snowmobiles (612)427-3410
MILLSIDE TAVERN AND SPORTING GOODS Snowmobile Parts Rupp Dealer ST. MICHAEL 497-9941	Arrive on a Snowmobile, receive a gift! Must be 19 years of age ADAIR LIQUOR Colonial Mall-St., Michael 8:00 a.m. to 10:00 p.m. Monday thru Saturday
HILLTOP INN FOOD LIQUOR 9-1 HANOVER 498-9940	TOM THUMB SUPERETTE OPEN Monday-Friday 6-11 AM PM Saturday 7-11 Sunday & Holidays 8-11 Corcoran-116 & Co. Rd. 10 420-2888
Big Woods Saloon LIQUOR ON & OFF SHORT ORDERS FOOD Where Friends Meet LORETTO 479-9940	TOM THUMB Sandwiches To Go Hot Dogs Made On The Spot Groceries - Cold Cuts, Etc. HAMEL Hwy. 101 & 55 478-6995
Medina Ballroom LIQUOR - FOOD DANCING - WED., FRI., SAT., SUN. Hwy. 55 HAMEL 478-6661	Pat's Liquor COLD WINE - BEER - LIQUORS HWY. 55 HAMEL 478-673
DON E. MAYER INC. MOBIL PRODUCTS Gasoline & Heating Oil 478-6041	CORK & BREW OFF SALE LIQUORS BEER - LIQUOR - WINES CO. RD. 116 CORCORAN 420-2854
Gloria's 101 Club ON & OFF SALE LIVE ENTERTAINMENT FRI. & SAT. SUNDAY LIQUOR 12 TO 12 FOOD NOW AVAILABLE SNOWMOBILERS WELCOME: OPEN 7 DAYS SNOWMOBILERS WELCOME CO. RD. 30 & HWY. 101 OSSEO 420-9984	DAR'S INN FLETCHER Open 6 AM for Breakfasts Cocktails - Full Menu Snowmobilers Welcome County Road 116 428-9281 HAMEL SNO RUNNERS Snowmobilers are invited-meetings 1st Monday of month. Charity & trail rides on marked club trails. Doug 478-6327 Doug 521-2335
Sundance GOLF CLUB 15240 113th Ave No. Osseo-Phone 425-5757	The Palace Inn Liquor Bar and Liquor Store on the corner of Bass Lake Road and West Broadway CRYSTAL 535-5010
DEL'S SNOW ROVERS A Dayton / Champlin Area Snowmobile Club To Join The Fun, Call Today! LOU HOLDEN, 427-3448	CRYSTAL CB Radio Sales & Service-All Accessories Including Antennas, Etc. for Sno-mobiles 5430 Lakeland Ave. No. CRYSTAL 537-6200
ANOKA WINTER KNIGHTS Bob Goble - 755-8991 Arnie Wicht - 753-4124 A Year 'Round Sport!	PLYMOUTH POLARS SNOWMOBILE CLUB 2nd Monday of Month at West Medicine Lake Com. Club. 7:30 p.m. New members welcome!
NORTHERN MINNESOTA RECREATIONAL LANDS •40,000 acres virgin land •Large or small parcels •15 counties to choose from •Most are heavily wooded •Some with lake, streams, etc. •Terms are available Jerry Gadbois Bus.: (612) 483-2010 Home: (612) 484-2074	



Permission to use map was granted by:
 Bureau of Public Service
 320 Washington Ave. So.
 Hopkins, Minnesota 55343



- NORTHWEST TRAILS ASSOCIATION WELCOMES YOU TO RIDE OUR TRAIL**
- For your safety and enjoyment please observe the following:
1. Do not wander off the trails. You have permission to ride the marked trails only.
 2. Do not damage any trees, shrubs, etc.
 3. Do not disturb wildlife or any livestock.
 4. Deposit all trash in barrels provided.
 5. Be careful when crossing roadways and cross only at 90 degrees.
 6. Remember that lakes are never completely safe due to river channels and springs eroding the ice away from the underside.
 7. Carry a compass when out in the woods or at night.
 8. Remember all snowmobilers are judged by the actions of a few. Please do not cause any disturbances or damage any property.
 9. Where trails follow public roads, obey all traffic laws and regulations, such as keep to the right, dim lights, etc.
 10. Snowmobiles are prohibited from operating on certain public streets in many towns. When in these areas watch for marked streets or check with city officials.



EXISTING TRAILS
 PROPOSED TRAILS
 PARKING

The advertisers on this map have contributed generously to help defray this cost. They are worthy of your patronage.
 "Snowmobiling Is Fun For Everyone"
 Thank You From The Northwest Trails Assoc.

NorthWest Trails Association was formed as a non-profit volunteer organization in 1973. Their aim was to build trails in Northwest Hennepin County using the help of the Minnesota Department of Natural Resources and its Grant-in-Aid program. Working closely with the Hennepin County Park Reserve Board and the Department of Natural Resources, dreams became reality.

Contracts to construct and maintain trails have been secured from Brooklyn Park, who is the sponsoring Government Body, Dayton, Champlin, Corcoran, Hassan Township, Loretto, Medina, Maple Grove, Plymouth, Rogers and Hamel.

Trails exist through the Park Reserves of Baker Park, Crow Hassan and Elm Creek Park.

Our thanks to all who have helped this happen. Enjoy the trails and respect our many landowners who have willingly given their permission for the use of their land.

NORTHWEST TRAILS ASSOCIATION meets the 1st Tuesday of the month, 7:30 p.m. at Medina Ballroom. We need your help, physically as well as financially, to continue to maintain the many miles of groomed trails in Northwest Hennepin County.

Hennepin County
Northwest Trails Of
Welcome To The



1981-1982

Everyone **TALKS** about trail conditions... We **DO** something about them!

... pulls the snow-grooming discs, blades and chains that keep trails beautifully groomed, no matter how hard or icy they may get. No grade too steep, no snow too deep!

THE TUCKER SNO-CAT



DISTRIBUTED BY:

TRACK! INC.

P.O. BOX 20541 • BLOOMINGTON, MN 55420
(612) 888-7372

These maps will identify that the trail system is a Grants-in-Aid trail and funded by the Department of Natural Resources and that the Department does not endorse any of the advertisers on the map.

RICARDO'S
Main Street Annandale
274-9997
Pizza-Hamb. • Beer-Set-ups
Welcome snowmobilers! We are on the west end of Wright county trails which connects with north Hennepin trails at Hanover-Maps for Wright county available in Hanover.
Party Room Available. Open 7 days
Fri.-Sat. 11 a.m.-2a.m.; Sun. 12-8 a.m.

Check Snow Condition
CALL MPLS Connection Mon.-Thur.
Evening 428-2392

RUSTIC ROOST
HWY. 2, IRON RIVER, WI 54847
Dining - Lounge - Motel
DON & JOAN ZAHLER
715-372-4426

KILLMER
ELECTRIC CO., INC.
ELECTRIC CONTRACTORS
COMMERCIAL
INDUSTRIAL
RESIDENTIAL
POWER & LIGHT MAINTENANCE & DESIGN
7217 77th AVE. NO.
425-2525

CRYSTAL BUSINESS MACHINES
and
TOTAL REGISTER SYSTEMS
CALCULATORS/FLEXWRITERS
TYPEWRITERS AND ADDING MACHINES
SERVICES ON ALL MAKES/RENTALS
6036 42nd Ave. No. 55422 537-1906

Century 21 - FAIRFAX
JUDY GARDNER
8711 Bass Lake Road
Minneapolis, Minnesota 55427
BUSINESS: (612) 535-2626
RESIDENCE: (612) 420-3580
Your Neighborhood Professional,
Here To Serve You!

PULASKI'S PALACE
Maple Grove
Co. Rd. 30 & Hwy. 152
425-8175
ENTERTAINMENT • FOOD • LIQUOR
OPEN 7 DAYS A WEEK!!!!

SKI-DOO
SNOWMOBILES

• PARTS • SERVICE • ACCESSORIES
425-4159

OSSEO SPORTS
340 CENTRAL AVE. • OSSEO, MINN.

EASY PLACE
The Wayzata Bank
and Trust Company
473-8855

Sport port 425-4577

SPORT PORT
AUTOMOTIVE PARTS
ARCTIC CAT SNOWMOBILES
HIGHWAY 52, OSSEO

ski-doo
PARON MOTORS, INC.
633-1066
1561 HWY 8
NEW BRIGHTON, MN.

MEDINA
Entertainment Center of the Northwest
Bowling • Ballroom

★ **DANCING** ★
Wed. thru Saturday
with Special Sunday Dances
Ballroom and Back 40

★ Swing ★ Old Tyme ★ Latin
6,500 Sq. Ft. Air Cushioned Dance Floor
BACK 40 - 50 - 60 - 70 MUSIC THURSDAY, FRIDAY & SATURDAY
Daily & Evening Dining & Cocktails
Bowling - Game Room - Banquets to 1,000
Ballroom Seating for 1,600
Reservation: 478-6661
1/4 Mile West of Hamel on Hwy. 55

Minnesota and Us
You Can't Beat 'em
For Fun!

Squeeze the most fun you can out of a Minnesota winter. Make up a Polaris family trail trip and let yourself go! On a Polaris, you can skim over powder snow for miles without worry. You can take on the tightest trails with ease. And climb the steepest hills. So get with a Minnesota winter and Polaris. You just can't beat 'em for fun!

Polaris
QUALITY SNOWMOBILES

Distributed by
LARSEN-OLSON COMPANY
900 SOUTH TURNERS CROSSROAD MINNEAPOLIS, MINNESOTA 55416

Wyatt • Danca

SPORTS CENTER
SALES — SERVICE

Visit Minnesota's Largest Clothing Department

10135 Central Avenue
Blaine, Minnesota
ARCTIC CAT
KAWASAKI
Phone — 786-3460

HEINEN'S
CHAMPION AUTO STORES
THE AUTO SUPPLY SUPERMARKET
HOURS:
MON.-FRI. 9-9
SAT. 8-4
New Location! 425-3771
409 Hwy 52 OSSEO

TRANS-CONTINENTAL TIRE SALES

- Automotive Accessories
- Famous Brand Tires
- Alliance
- Armstrong • Carleton
- Dunlop
- Uniroyal
- Polson

AVAILABLE FOR — Passenger, Truck, Farm, RV, Industrial, Special Purpose, Earthmover, Gocart, Grader, Tires & Tubes

7968 NE MAIN
784-0200
FOR INFORMATION & ORDERING CALL TOLL FREE
MINNESOTA-1-800-842-2618 OUTSTATE-1-800-328-2438

The gold shipment has arrived.

Stop in your nearby Polaris dealer and pan the all-new Polaris lineup for 1982. You'll be dazzled by the glittering new stars. Better hurry though...before the gold rush starts.

'82 TX-L

POLARIS
SALES & SERVICE

HEINEN AND MASON INC.
425-2178
MAIN STREET OSSEO

RAPID SPORTS CR, inc.
3050 Coon Rapids Boulevard, Coon Rapids, Minnesota 55433
COMPLETE SALES & SERVICE

- YAMAHA
- SUZUKI
- HONDA

R&W WELDING & MACHINE INC.
HELI-ARC WELDING
425-5221
252 - 4th Ave. S.E.
RAY ROONEY RES. 425-4881
WALLY CURRENT RES. 425-2965

SCHARBER AND SONS
JOHN DEERE SALES & SERVICE

NOTHING RUNS LIKE A DEERE

428-4107 428-2445
ROGERS, MINN.

Italian and American Food
D'Vinci's
Snowmobilers Welcome!
Luce Line Trail at Backdoor!
Downtown Watertown
955-1711
OPEN 7 Days a Week!

MEDICAL CENTER PHARMACY
5640 W. Broadway
Crystal, Minnesota 55428
PHONE 537-8461

612 • 922 • 2166

INDUSTRIAL CUSTOM PRODUCTS
5244 EDEN CIRCLE MINNEAPOLIS, MN 55436

- STEEL RULE DIE CUTTING
- PROMOTIONAL PRINTING
- PRESSURE SENSITIVE LABELS
- PRODUCT IDENTIFICATION

PARTS & ACCESSORIES 421-8360
SALES & SERVICE 421-8701

OSSEO SPORTS
340 CENTRAL AVE. • OSSEO, MINN.

Lawn King, Inc.
GARDEN STORE NURSERY
GRADING DELIVERY
SOD LAYING
420-2909 7555 CTY. RD. 116 CORCORAN, MN.

NORTHWAY SPORTS
Polaris **BOMBARDIER** moto-ski.
QUALITY SNOWMOBILES
OLD HWY. 8
CIRCLE PINES, MINN.
786-4379

Country Kitchen
Hwy 10 & I 35 W
MOUNTS VIEW
open 24 hours
786-3415

JOHN DEERE
SNOWMOBILES
SNOWMOBILE CLOTHING

- PARTS
- SERVICE
- ACCESSORIES
- CONVENIENT FINANCING

425-4159

OSSEO SPORTS
340 CENTRAL AVE. • OSSEO, MINN.

IMI
Insurance Brokers
(612) 546-0419
For
Auto - Homeowners - Business - Airplanes
Life - Health - Disability and any specialties line

Dahlin Truck Sales
• GENERAL AUTO & TRUCK REPAIR • WELDING
DON DAHLIN — Owner
2819 85th Ave. No., Mpls, MN. 55444
BUSINESS RESIDENCE
425-6366 560-0877

ETZEL EXCAVATING
ROAD WORK • GRADING • EXCAVATING
6403 Valley View Road, Hamel, MN 55340
478-6974

Medina Sales & Service
SALES, PARTS, SERVICE & CLOTHING
PICK-UP CAMPERS — YAMAHA SNOWMOBILES

Yamaha SRV
YAMAHA
SPECIALIZED YAMAHA SERVICE
478-6631
½ Mile West of Medina Ballroom, Hamel