

Riteway Motor Parts Inc.
1130 Hiway 55
Plymouth, MN 55441
Engine Rebuilding - Crankshaft Grinding
Snow Belts & Plugs Wholesale
TK7 Booster
546-2458

SNOWMOBILERS UNITE AT PIXIE LIQUORS
1512 Brookdale Drive
Your Friendly Liquor Store
PHONE 560-5680
We have your warm weather products!

HAPPY CHEF RESTAURANTS
PLYMOUTH
Junction Hwy. 55 & 494
ROGERS
Junction I-94W & Hwy. 101

PDO FOOD STORES
GAS - OIL - HOT SANDWICHES - COFFEE - POP - BEER
Video Games
Open 6-12 7 days
RAINTREE PLAZA
Relax and Warm Up Here
All Your Needs in One Place
Also Room to Park and Ride from Here
Plaza Open 7 Days a Week
Ernie's Ice Cream & Sandwich Shoppe
Raintree Liquor Martell's Dog Grooming P.D.G.

FRITZ & JOYCE'S INC.
130 W. Railway Street
Loretto, MN 55357
479-1788
Home of the Big Hamburger

DAYTONA GOLF TENNIS
RACQUETBALL CLUB
INDOOR HORSESHOE
BEER - SETUPS - FOOD
DAYTON 427-6110

MILLSIDE TAVERN AND SPORTING GOODS
Snowmobile Parts
Rupp Dealer
ST. MICHAEL 497-2905

HILLTOP INN
FOOD LIQUOR
9-1
HANOVER 498-7694

Big Woods Saloon
LIQUOR ON & OFF
SHORT ORDERS FOOD
Where Friends Meet
LORETTO 479-9940

Medina Ballroom
LIQUOR - FOOD
DANCING - WED., FRI., SAT., SUN.
Hwy. 55
HAMEL 478-6661

TOM THUMB
Hwy. 101 & 55 Plymouth
Open 7 Days a Week
Cold Pop & Beer
Groceries & Gas
Party Mart Liquors Next Door
Beer Wine Liquors

DITTER INC.
SINCE 1946
COOLING - HEATING
478-9558

Sundance GOLF CLUB
Parking
15240 113th Ave. No.
OSSEO - Phone 420-4800

HAMEL SNO-RUNNERS
Snowmobilers Invited - Meetings
1st Monday of Month - Hamel
American Legion, Charity & Trail
Rides on marked Club Trails. Club
Trips.
Bob 473-6008 Doug 478-6327

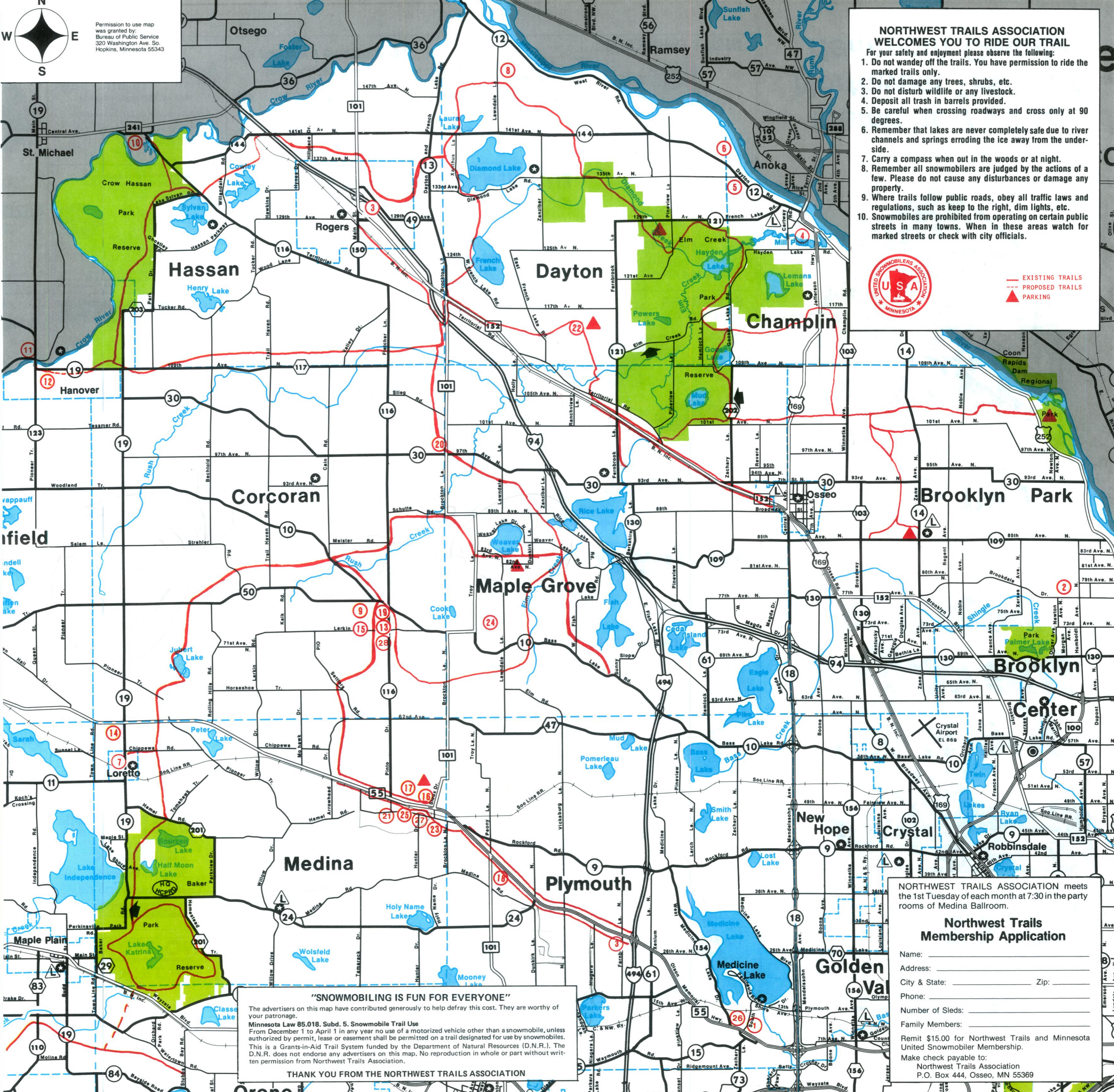
INN KAHOO'S
ON & OFF SALE
45 - HAMEL RD.
HAMEL, MN
478-9934

FARMERS STATE BANK OF HAMEL
OFFICES AT HAMEL • CORCORAN
145 HAMEL ROAD P.O. BOX 236
HAMEL, MINNESOTA 55340
478-6611 420-2025
Main Branch Corcoran Detach

Enjoy the Beauty of a Ride Through Hennepin Parks
More than 50 miles of groomed, marked snowmobile trails wind through the beautiful natural setting of eight Hennepin Parks facilities, and provide access to the network of public trails that surrounds the metro area.
We hope you enjoy your trip through this natural beauty, and ask that you do your part in making the experience enjoyable for others. Please comply with the 30 m.p.h. speed limit, and use designated trails only. Hennepin Parks trails are open from 8 a.m. to 11 p.m. Sunday through Thursday, and from 8 a.m. to 1 a.m. Friday and Saturday.
For more information about snowmobiling and other recreation opportunities in Hennepin Parks, address your questions to: Hennepin Parks
Box 41320
12615 County Road 9
Plymouth, MN 55441
or phone 559-9000



Permission to use map was granted by:
Bureau of Public Service
320 Washington Ave. So.
Hopkins, Minnesota 55343



NORTHWEST TRAILS ASSOCIATION WELCOMES YOU TO RIDE OUR TRAIL
For your safety and enjoyment please observe the following:

1. Do not wander off the trails. You have permission to ride the marked trails only.
2. Do not damage any trees, shrubs, etc.
3. Do not disturb wildlife or any livestock.
4. Deposit all trash in barrels provided.
5. Be careful when crossing roadways and cross only at 90 degrees.
6. Remember that lakes are never completely safe due to river channels and springs eroding the ice away from the under-side.
7. Carry a compass when out in the woods or at night.
8. Remember all snowmobilers are judged by the actions of a few. Please do not cause any disturbances or damage any property.
9. Where trails follow public roads, obey all traffic laws and regulations, such as keep to the right, dim lights, etc.
10. Snowmobiles are prohibited from operating on certain public streets in many towns. When in these areas watch for marked streets or check with city officials.



— EXISTING TRAILS
- - - PROPOSED TRAILS
▲ PARKING

"SNOWMOBILING IS FUN FOR EVERYONE"
The advertisers on this map have contributed generously to help defray this cost. They are worthy of your patronage.
Minnesota Law 85.018, Subd. 5. Snowmobile Trail Use
From December 1 to April 1 in any year no use of a motorized vehicle other than a snowmobile, unless authorized by permit, lease or easement shall be permitted on a trail designated for use by snowmobilers. This is a Grants-in-Aid Trail System funded by the Department of Natural Resources (D.N.R.). The D.N.R. does not endorse any advertisers on this map. No reproduction in whole or part without written permission from Northwest Trails Association.
THANK YOU FROM THE NORTHWEST TRAILS ASSOCIATION

NORTHWEST TRAILS ASSOCIATION meets the 1st Tuesday of each month at 7:30 in the party rooms of Medina Ballroom.

Northwest Trails Membership Application

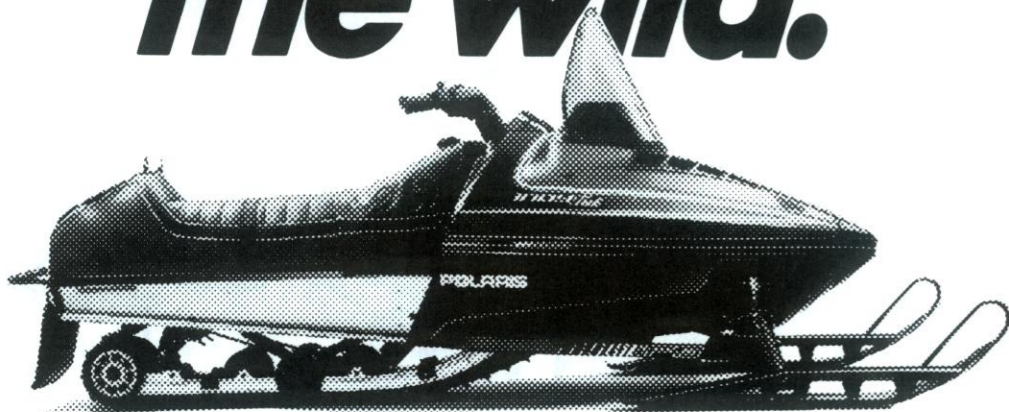
Name: _____
Address: _____
City & State: _____ Zip: _____
Phone: _____
Number of Sleds: _____
Family Members: _____
Remit \$15.00 for Northwest Trails and Minnesota United Snowmobiler Membership.
Make check payable to:
Northwest Trails Association
P.O. Box 444, Osseo, MN 55369

Hennepin County
Northwest Trails Of
Welcome To The



1986 - 1987

Answer
the call of
the wild.



To reach your secret riding place, you need a sled that responds to you as quick as you do to the trail. A sled with a strong suspension, comfortable ride, and the power it takes to get you where you want to go, and back.

You need a Polaris Indy.

Come in today and see what's behind Polaris snowmobiles, besides the competition. Next time you hear the call of the wild, the sled you'll want to answer on is a Polaris Indy.

POLARIS
Nothing beats the way we're built.

WARNER EQUIPMENT CO.

7520 LYNDALE AVE. SO.
RICHFIELD, MN
869-7533
POLARIS
MASTER SERVICE DEALER, PARTS,
AND SALES FOR 19 YEARS

Evergreen Electric Inc.
RESIDENTIAL
COMMERCIAL—INDUSTRIAL
536-1122
or
572-8391 - Penny Scholl

SCHARBER AND SONS

THE Cat IS BACK
SALES & SERVICE
428-4107 428-2445
ROGERS, MN

NORTHWAY SPORTS

OLD HWY. 8
CIRCLE PINES, MINN.
786-4379

PULASKI'S PALACE


Maple Grove
Co. Rd. 30 & Hwy. 152
425-8175
ENTERTAINMENT • FOOD • LIQUOR
OPEN 7 DAYS A WEEK!!!

Sno-Barons Snowmobile Club
NEW MEMBERS WELCOME
Contact
RON SEVERSON 784-1567 PHIL HOEFS 427-2322
HAY DAY RACE September 13, 1987

TOUSLEY HONDA YAMAHA DISCOUNT CENTER

3 and 4 WHEELERS
WHITE BEAR LAKE, MINNESOTA
(612) 483-8296

The Bank
EASY PLACE Wayzata
473-8855

RIVERVIEW SPORTS
SALES, PARTS, SERVICE & CLOTHING
YAMAHA SNOWMOBILES
WE BUY AND SELL USED TRUCKS

Yamaha SRV
YAMAHA
"WE WILL NOT BE UNDERSOLD"
SPECIALIZED YAMAHA SERVICE
441-1799
On Hwy 10 — 1/2 Mile East of Hwy 169

Fowler Electric Company
9141 Lyndale Ave.
Bloomington, MN 55420
612-884-5401
 CLUTCHES 
WATTS LINE PISTONS
MN 1-800-247-1375
USA 1-800-843-1424

Medina Entertainment Center and Motel
500 Highway 55, Medina, MN 55340
ENTERTAINMENT CENTER OF THE NORTHWEST
4 1/2 Miles West of Hwy. 55 — 15 Miles West of Minneapolis
Completely Air Conditioned
Call: (612) 478-6661
FACILITIES: Wedding Reception, Banquet, Parties, Reception, Meetings
FULL BAR SERVICE ON & OFF SALES LICENSES
BANQUET ROOMS From 10 to 1000
CAMPER PARKING
BALLROOM Seating 10,000-15,000 in 4 Atrium Upper Dance Floor 2 Ballrooms, 3 Bars
ONE IN THE VICTORIAN ROOM Day to 10 P.M. & Sat. 10 to 2 in Sun. — Champagne Brunch 10 to 2 P.M. — Full menu Sun. & Sat.
BACK-45 LOUNGE 100, 825 & Century Blvd. Every Thru, Fri., Sat. 9 to 11 No Cover Charge
GAME ROOM with Video, Pool, etc.
BOWLING 12 Brunswick Automatic Lanes, Automatic Pin Spinning and Scoring
Medina Motor Inn
66 Deluxe Rooms — Suite, Wake-up, Restaurant, Bar and More. Free Internet Exp. (612) 478-9770

RUSTIC ROOST
DINING - LOUNGE - MOTEL
Hwy. 2 - Iron River, WI 54847
Iron River's snowmobile headquarters. Gateway to the Chequamegon Forest. Over 500 miles of groomed trails. Hundreds of miles of unplowed roads. Fine Dining - Comfortable Log Cabins
Call for Reservation 715-372-4426

SONNY'S
AUTO REPAIR & WELDING
NO JOB TOO BIG OR SMALL
HAMEL, MN
478-6499

R&W WELDING & MACHINE INC.
HELI-ARC WELDING
425-5221
417 HWY. 152 SERVICE ROAD
OSSEO, MN 55369
RAY ROONEY WALLY CURRENT

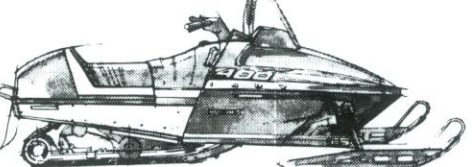
ARCTIC CAT
SPORT PORT
Hwy. 152 Osseo Phone 425-4577
THE CAT
Get on it.
Authorized Arctic
Arctic Cat Dealer

ski-doo

PARTS • SERVICE • ACCESSORIES

OSSEO SPORTS
DOWNTOWN OSSEO
425-4159

D'Vinci's Restaurants
Italian and American Food
Luce Line Trail at Backdoor!
Downtown Watertown
OPEN 7 Days a Week!
WATERTOWN 955-1711 NAVARRE 471-0196 LONG LAKE 473-7930 WACONIA 442-2171

BEFORE OTHERS CAN MEASURE UP, THEY HAVE TO CATCH ONE.

The 1986 Polaris Indy 400 has a reputation as the trail-blazing sled to beat. With its 398 cc liquid-cooled Polaris-Fuji engine, wide stance IFS, and new tapered tunnel, it's no wonder this peaceful-looking machine is such a terror on the trail. See one today.
POLARIS
Nothing beats the way we're built.

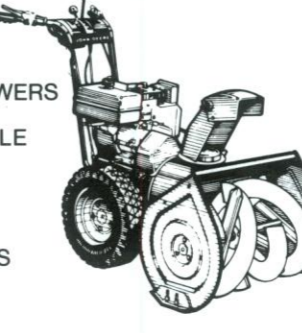
POLARIS SNOWMOBILES
SALES & SERVICE
HEINEN AND MASON INC.
425-2178
MAIN STREET OSSEO

SNO-STUFF DEALERS ONLY - WE DO NOT SELL RETAIL
TROCHS ENTERPRISE INC.
"We Wish To Thank The NORTHWEST TRAIL ASSOCIATION For All The Fine Work You Have Done For Snowmobiling!"
HIGHWAY 12 EAST DELANO (612) 972-3395

Osseo Feed and Stove Store
115 Central Avenue
Osseo, Mn. 55369
424-2141
STOP IN AND SEE OUR HUGE
DISPLAY OF NEW QUALITY WOOD STOVES
BIRD FEED OF ALL KINDS RABBIT PELLETS DOG FOOD CAT FOOD

Registered Representative John Hancock
Mutual Funds, Variable Life and Annuities
Joseph L. Yard
Staff Manager
Southgate Office Plaza, Suite 805
5001 West 80th Street
Minneapolis, Minnesota 55437
Bus. 612-835-7727, Res. 612-521-2638

John Hancock
Mutual Life Insurance Company
One of the John Hancock companies
Life, Health and Universal Life

JOHN DEERE

• SNOW BLOWERS
• SNOWMOBILE CLOTHING
• TRACTORS
• CHAIN SAWS
PARTS • SERVICE • ACCESSORIES

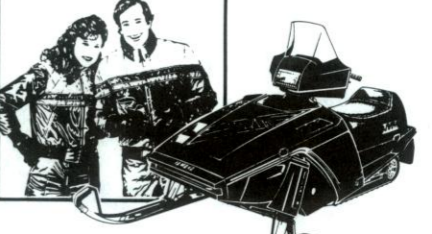
OSSEO SPORTS
DOWNTOWN OSSEO
425-4159


PARON MOTORS, INC.
633-1066
1561 HWY 8
NEW BRIGHTON, MN.



MEDICAL CENTER PHARMACY
5640 W. Broadway
Crystal, Minnesota 55428
PHONE 537-8461

ETZEL EXCAVATING
ROAD WORK • GRADING • EXCAVATING
6403 Valley View Road, Hamel, MN 55340
478-6974


HI-10 SPORTS
NEW & USED PARTS & ACCESSORIES
We buy used snowmobiles
(612)427-3410
8110 Highway 10, Anoka, MN 55303

Go snowbound with Yamaha Phazer

The 485cc Yamaha Phazer's high-climbing, deep-plowing power makes it ideal for cross-country travel. Lightweight design, easy handling for the whole family.
RAPID SPORTS, INC.
3050 Coon Rapids Boulevard, Coon Rapids, Minnesota 55433
COMPLETE SALES & SERVICE
YAMAHA
Built for the fun of it.
PARTS & ACCESSORIES 421-8360
SALES & SERVICE 421-8701

Wittman's Marine
Let us make your trail riding enjoyable.

7121 Oxford St.
St. Louis Park, MN
Tel: 929-3788

When there's a tough job to be done...

Put the Cat out!
(The Tucker SNO-CAT... The world's leading, 4-track snow vehicle!)
TRACK, INC., P.O. Box 20541,
Bloomington, MN 55420 (612) 888-7372
Your Exclusive Midwest Tucker Distributor

TRI-K Sports Inc.
Polaris Sales & Service
473-9386
Long Lake, MN

Northeast Marine Inc.
2800 N.E. HWY 10
MINNEAPOLIS, MINNESOTA 55432
PHONE (612) 786-4060
Sales • Service • Parts
Yamaha Snowmobiles

YAMAHA Phazer

PALACE - INN

\$1.00 OFF ANY LARGE PIZZA
Lounge & Bottle Shop
CRYSTAL, MN
537-9921 535-5010

Palace - Inn
\$1.00 OFF ANY LARGE PIZZA
Lounge & Bottle Shop
CRYSTAL, MN
537-9921 535-5010

All you can eat buffet 7 days a week
\$3.00 OFF Large Thick Crust Pizza With This Ad

\$2.00 OFF Any Large Pizza With This Ad
Open til 2:00 a.m., Fri.-Sat. night
478-2103
Across from Medina Ballroom

Wittman's Marine
Let us make your trail riding enjoyable.

7121 Oxford St.
St. Louis Park, MN
Tel: 929-3788

When there's a tough job to be done...

Put the Cat out!
(The Tucker SNO-CAT... The world's leading, 4-track snow vehicle!)
TRACK, INC., P.O. Box 20541,
Bloomington, MN 55420 (612) 888-7372
Your Exclusive Midwest Tucker Distributor

Northeast Marine Inc.
2800 N.E. HWY 10
MINNEAPOLIS, MINNESOTA 55432
PHONE (612) 786-4060
Sales • Service • Parts
Yamaha Snowmobiles

YAMAHA Phazer

PALACE - INN

\$1.00 OFF ANY LARGE PIZZA
Lounge & Bottle Shop
CRYSTAL, MN
537-9921 535-5010

Palace - Inn
\$1.00 OFF ANY LARGE PIZZA
Lounge & Bottle Shop
CRYSTAL, MN
537-9921 535-5010

Palace - Inn
\$1.00 OFF ANY LARGE PIZZA
Lounge & Bottle Shop
CRYSTAL, MN
537-9921 535-5010