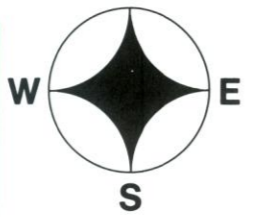
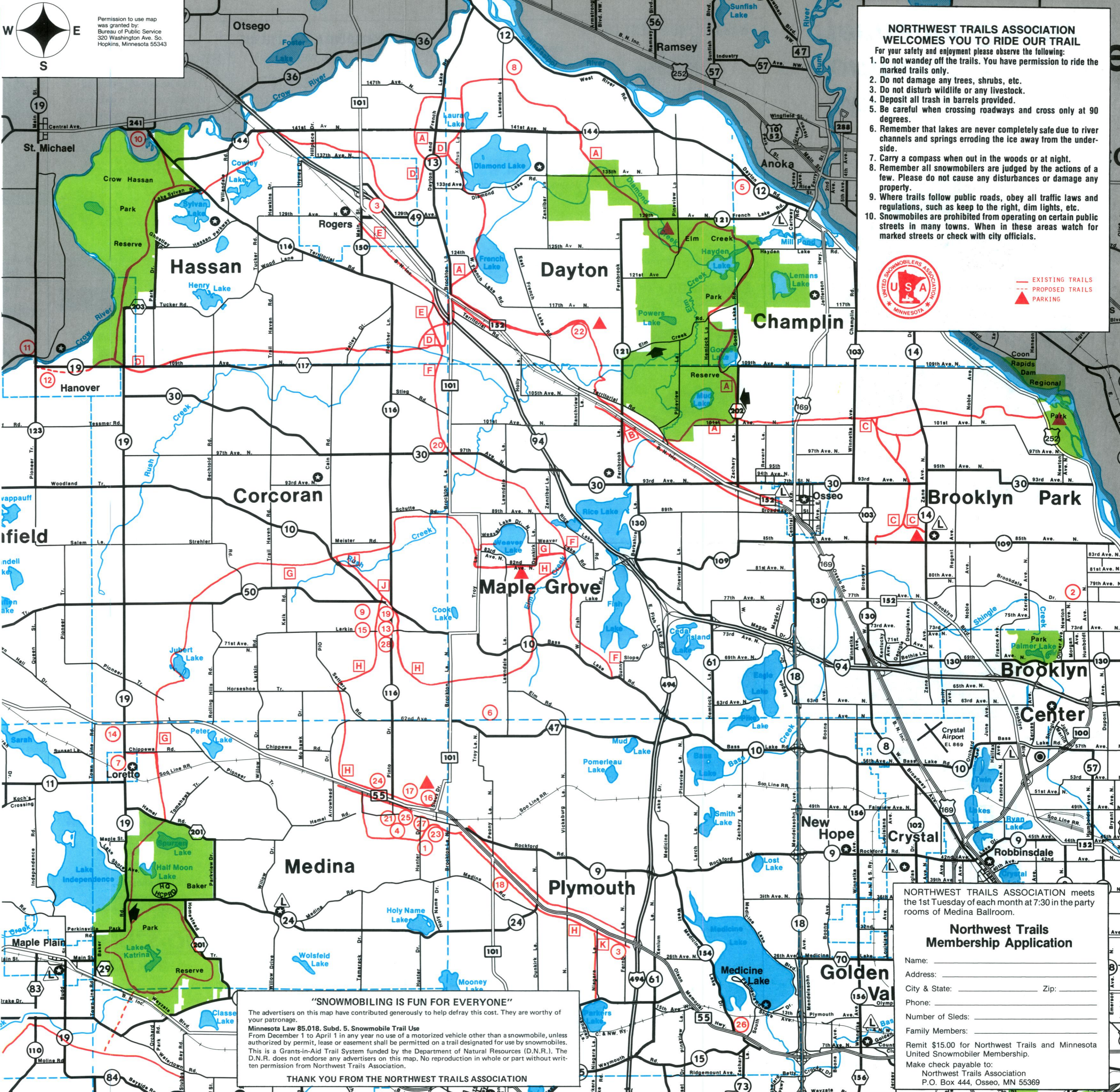


<b>DES LAURIERS &amp; SONS</b> Builders & Remodeling HAMEL, MN 55340 478-6813	Snowmobilers Unite at <b>Pixie Liquors</b> 1512 Brookdale Drive Your Friendly Liquor Store PHONE 560-5680 We have your warm weather products!
<b>HAPPY CHEF</b> RESTAURANTS PLYMOUTH Junction Hwy. 55 & 494 ROGERS Junction I-94W & Hwy. 101	<b>GROTH SEWER &amp; WATER</b> 13820 Sunset Tr. Plymouth, MN 55441 478-6712
<b>PDO FOOD STORES</b> GAS • OIL • HOT SANDWICHES • COFFEE • POP • BEER Open 6-12 7 days <b>RAINTREE PLAZA</b>	<b>BAUER TRUCKING CO.</b> Hauling & Excavating D3 BOB BAUER (612) 559-2721 17751 - 63rd Avenue Maple Grove, MN 55369
<b>FRITZ &amp; JOYCE'S INC.</b> 130 W. Railway Street Loretto, MN 55357 479-1788 Home of the Big Hamburger	<b>SNO-BARONS SNOWMOBILE CLUB</b> NEW MEMBERS WELCOME Contact RON SEVERSON PHIL HOEFS 784-1567 427-2322 HAY DAY RACE September 11, 1988
<b>DAYTONA COUNTRY CLUB</b> GOLF • INDOOR TENNIS RACQUETBALL • INDOOR HORSESHOE • INDOOR BADMINTON • BEER & BROASTED CHICKEN DAYTON 427-6110	<b>10-50 CLUB</b> Good Spirits • Good Food • Good Times Liquor On-Off Sale Food Served Daily 11:30 AM-9:30 PM Except Sunday 20115 Cty. Rd 10 • CORCRAN 420-3606
<b>MILLSIDE TAVERN AND SPORTING GOODS</b> Snowmobile Parts Rupp Dealer <b>ST. MICHAEL 497-2905</b>	<b>COUNTRY BAR &amp; GRILL</b> 10950 4th St. N.E. 498-8038 Hanover, MN Richard Wandersee
<b>HILLTOP INN</b> FOOD LIQUOR 9-1 <b>HANOVER 498-7694</b>	<b>TOM THUMB</b> Gas and Deli Monday-Friday 5:30-11 Saturday & Sunday 6:30-11 Holidays 7-11 Corcoran-116 & Co. Rd. 10 420-2888
<b>Big Woods Saloon</b> LIQUOR ON & OFF SHORT ORDERS FOOD Where Friends Meet <b>LORETTO 479-9940</b>	<b>NEUMANN'S ENTERPRISE</b> Backhoe, Bobcat, Welding & Snow Removal 20100 Larkin Road Corcoran, MN 55340 420-2547
<b>Medina Ballroom</b> LIQUOR • FOOD DANCING - WED., FRI., SAT., SUN. Hwy. 55 <b>HAMEL 478-6661</b>	<b>WEST BOUND OFF SALE</b> COLD BEER - LIQUOR Imported & Domestic Wines Wine Coolers - Ice <b>712 Hwy. 55 Hamel 478-6733</b>
<b>TOM THUMB</b> Hwy. 101 & 55 Plymouth Open 7 Days a Week Cold Pop & Beer Groceries & Gas Party Mart Liquors Next Door Beer Wine Liquors	<b>Stanchion</b> In the Heart of Downtown Corcoran WELCOME SNOWMOBILERS TO CORCORAN, U.S.A. Liquor & Beer Stop in and say "where in the hell am I?"
<b>DITTER, INC.</b> SINCE 1946 COOLING - HEATING 478-9558	<b>EATING &amp; DRINKING EMPORIUM</b> THE TWIN CITIES LARGEST PATIO OPEN 7 DAYS Gamework Saturday TV. Sunday Liquor 12 to 12
<b>Sundance</b> FOOD & LIQUOR <b>GOLF CLUB</b> Parking 15240 113th Ave. No. OSSEO - Phone 420-4800	Snowmobilers Welcome! <b>COUNTY ROAD 30 &amp; HIGHWAY 101</b> <b>OSSEO, MINNESOTA 55369</b> 420-2588 HOME OF THE WORLD'S GREATEST HAMBURGERS!
<b>HAMEL SNO-RUNNERS</b> Snowmobilers Invited - Meetings 1st Monday of Month - Hamel American Legion. Charity & Trail Rides on marked Club Trails. Club Trips. Bob 473-6008 Doug 478-6327	<b>Countryside Cafe</b> 842 Hwy. 55 Hamel, Min. 55340
<b>INN KAHOOT'S</b> ON & OFF SALE 45 - HAMEL RD. HAMEL, MN 478-9934	<b>LARSON AUTO REPAIR &amp; TOWING, INC.</b> 11320 Hwy. 55 W. 545-1680 Dwight Larson Complete Auto Repair Service Tires • Batteries
<b>FARMERS STATE BANK OF HAMEL</b> OFFICES AT HAMEL • CORCORAN 145 HAMEL ROAD P.O. BOX 236 HAMEL, MINNESOTA 55340 478-6611 420-2025 Main Branch Corcoran Detach	<b>FDIC</b>
<b>A FULL SERVICE BANK</b> Enjoy the Beauty of a Ride Through Hennepin Parks More than 50 miles of groomed, marked snowmobile trails wind through the beautiful natural setting of eight Hennepin Parks facilities, and provide access to the network of public trails that surrounds the metro area. We hope you enjoy your trip through this natural beauty, and ask that you do your part in making the experience enjoyable for others. Please comply with the 30 m.p.h. speed limit, and use designated trails only. Hennepin Parks trails are open from 8 a.m. to 11 p.m. Sunday through Thursday, and from 8 a.m. to 1 a.m. Friday and Saturday. For more information about snowmobiling and other recreation opportunities in Hennepin Parks, address your questions to: Hennepin Parks Box 41320 12615 County Road 9 Plymouth, MN 55441 or phone 559-9000	



Permission to use map was granted by:  
 Bureau of Public Service  
 320 Washington Ave. So.  
 Hopkins, Minnesota 55343



- NORTHWEST TRAILS ASSOCIATION WELCOMES YOU TO RIDE OUR TRAIL**
- For your safety and enjoyment please observe the following:
1. Do not wander off the trails. You have permission to ride the marked trails only.
  2. Do not damage any trees, shrubs, etc.
  3. Do not disturb wildlife or any livestock.
  4. Deposit all trash in barrels provided.
  5. Be careful when crossing roadways and cross only at 90 degrees.
  6. Remember that lakes are never completely safe due to river channels and springs eroding the ice away from the under-side.
  7. Carry a compass when out in the woods or at night.
  8. Remember all snowmobilers are judged by the actions of a few. Please do not cause any disturbances or damage any property.
  9. Where trails follow public roads, obey all traffic laws and regulations, such as keep to the right, dim lights, etc.
  10. Snowmobiles are prohibited from operating on certain public streets in many towns. When in these areas watch for marked streets or check with city officials.



— EXISTING TRAILS  
 - - - PROPOSED TRAILS  
 ▲ PARKING

**"SNOWMOBILING IS FUN FOR EVERYONE"**

The advertisers on this map have contributed generously to help defray this cost. They are worthy of your patronage.

Minnesota Law 85.018, Subd. 5, Snowmobile Trail Use  
 From December 1 to April 1 in any year no use of a motorized vehicle other than a snowmobile, unless authorized by permit, lease or easement shall be permitted on a trail designated for use by snowmobilers. This is a Grants-in-Aid Trail System funded by the Department of Natural Resources (D.N.R.). The D.N.R. does not endorse any advertisers on this map. No reproduction in whole or part without written permission from Northwest Trails Association.

**THANK YOU FROM THE NORTHWEST TRAILS ASSOCIATION**

NORTHWEST TRAILS ASSOCIATION meets the 1st Tuesday of each month at 7:30 in the party rooms of Medina Ballroom.

**Northwest Trails Membership Application**

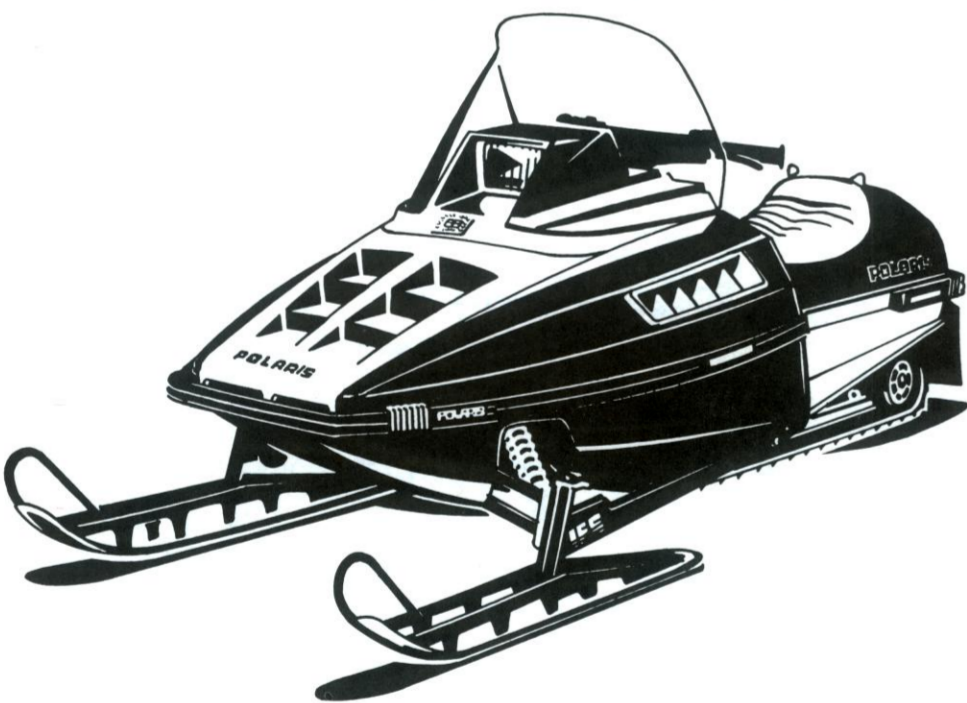
Name: \_\_\_\_\_  
 Address: \_\_\_\_\_  
 City & State: \_\_\_\_\_ Zip: \_\_\_\_\_  
 Phone: \_\_\_\_\_  
 Number of Sleds: \_\_\_\_\_  
 Family Members: \_\_\_\_\_  
 Remit \$15.00 for Northwest Trails and Minnesota United Snowmobiler Membership.  
 Make check payable to:  
 Northwest Trails Association  
 P.O. Box 444, Osseo, MN 55369



Hennepin County  
Northwest Trails Of  
Welcome To The



This snowmobile is for experienced riders only.



PULL THE TRIGGER OF  
A LOADED INDY.

Introducing the Indy 400 Classic. We like to think of it as a loaded Indy.

It comes with key start and handwarmers standard. And full instrumentation, with accessory lights for temperature, low oil, headlight high beam and handwarmers. And it's styled so that it looks like

someone spent all summer customizing it.

Underneath it all, it's still an Indy 400. It'll still give you the thrill that only an Indy can deliver. But beware—we're only building a few. So if you want to pull the trigger of a loaded Indy, you'd better do it soon.

**POLARIS**  
NOTHING BEATS THE WAY WE'RE BUILT.

**WARNER EQUIPMENT CO.**  
  
7520 LYNDALE AVE. SO.  
RICHFIELD, MN  
869-7533  
**POLARIS**  
MASTER SERVICE DEALER, PARTS,  
AND SALES FOR 19 YEARS

**The Bank**  
EASY PLACE Wayzata  
473-8855


**R&W WELDING & MACHINE INC.**  
HELI-ARC WELDING  
425-5221  
417 HWY. 152 SERVICE ROAD  
OSSEO, MN 55369  
RAY ROONEY WALLY CURRENT

**Osseo Feed and Stove Store**  
115 Central Avenue  
Osseo, MN 55369  
424-2141  
STOP IN AND SEE OUR HUGE  
DISPLAY OF NEW QUALITY WOOD STOVES  
BIRD FEED RABBIT DOG CAT  
OF ALL KINDS PELLETS FOOD FOOD

**Go snowbound with  
Yamaha Phazer**  
  
The 485cc  
Yamaha Phazer's  
high-climbing, deep-plowing power makes it  
ideal for cross-country travel. Lightweight  
design, easy handling for the whole family.

COMPLETE UNDERCARRIAGE SERVICE  
TRACK PRESS - RAIL, ROLLER & IDLER BUILDUP  
NEW AND USED PARTS  
ENGINE AND FINAL DRIVE REPAIRS  
JCT. HWYS. 152 & 101  
P.O. Box 640  
Osseo, MN 55369  
**GOPHER**  
Tractor Service  
JIM LUND  
(612) 428-2950

**Evergreen Electric Inc.**  
RESIDENTIAL  
COMMERCIAL—INDUSTRIAL  
536-1122  
or  
572-8391 - Penny Scholl

**RIVERVIEW SPORTS**  
SALES, PARTS, SERVICE & CLOTHING  
YAMAHA SNOWMOBILES  
WE BUY AND  
SELL USED  
TRUCKS  
  
Yamaha  
SRV  
**YAMAHA**  
SPECIALIZED YAMAHA SERVICE  
441-1799  
On Hwy 10 — 1/2 Mile East of Hwy 169

**ARCTIC CAT**  
SPORT PORT  
Hwy. 152 Osseo Phone 425-4577  
**THE CAT**  
Get on it.  
Authorized Arctic  
Arctic Cat Dealer

Registered Representative John Hancock  
Mutual Funds, Variable Life and Annuities  
Joseph L. Yard  
Staff Manager  
Southgate Office Plaza, Suite 805  
5001 West 80th Street  
Minneapolis, Minnesota 55437  
Bus. 612-835-7727, Res. 612-521-2638  
**John Hancock**  
HONOR CLUB  
Mutual Life Insurance Company  
One of the John Hancock companies  
Life, Health and Universal Life


**RAPID SPORTS** **TRC, Inc.**  
3050 Coon Rapids Boulevard, Coon Rapids, Minnesota 55433  
COMPLETE SALES & SERVICE  
**YAMAHA**  
Built for the fun of it.  
PARTS & ACCESSORIES 421-8360  
SALES & SERVICE 421-8701


**Wittman's Marine**  
Let us make your trail riding enjoyable.  
**Polaris**  
QUALITY SNOWMOBILES  
7121 Oxford St.  
St. Louis Park, MN  
Tel: 929-3788


**SCHARBER  
AND SONS**  
  
**THE  
Cat  
IS BACK**  
SALES & SERVICE  
428-4107 428-2445  
ROGERS, MN

**YAMAHA**  
SPECIALIZED YAMAHA SERVICE  
441-1799  
On Hwy 10 — 1/2 Mile East of Hwy 169

**Fowler**  
Electric Company  
9141 Lyndale Ave.  
Bloomington, MN 55420  
612-884-5401  
**COMET** CLUTCHES **Wiseco**  
WATTS LINE PISTONS  
MN 1-800-247-1375  
USA 1-800-843-1424

**ski-doo**  
  
FORMULA MX  
PARTS • CLOTHING • SERVICE • ACCESSORIES  
**OSSEO SPORTS**  
DOWNTOWN OSSEO  
425-4159

**JOHN DEERE**  
  
• AMT 600  
• SNOWBLOWERS  
• TRACTORS  
• CHAIN SAWS

When there's a  
tough job to be done...  
  
Put the **Cat** out!  
(The Tucker SNO-CAT...  
The world's leading,  
4-track snow  
vehicle!)

THE  
TUCKER  
SNO-CAT  
(612) 888-7372  
  
TRACK, INC., P.O. Box 20541,  
Bloomington, MN 55420 (612) 888-7372  
Your Exclusive Midwest Tucker Distributor


**NORTHWAY  
SPORTS**  
**Polaris**  
QUALITY SNOWMOBILES  
OLD HWY. 8  
CIRCLE PINES, MINN.  
786-4379

**MEDINA BALLROOM**  
One-fourth mile west of Hamel on  
Highway #55  
FREE RESERVATIONS 478-6661  
DANCING FRIDAY & SATURDAY  
Check for Sunday Dances  
and Special Big Band Nights  
Special Weekend Rates at Local Motels  
Contact: MEDINA 478-6661  
Back 40 - THURS., COLLEGE BAND  
FRI & SAT. NIGHTS - Country Rock

**D'Vinci's**  
Restaurants  
Italian and  
American Food  
Luce Line Trail at Backdoor!  
Downtown Watertown  
OPEN  
7 Days  
a  
Week!  
WATERTOWN 955-1711  
NAVARRE 471-0196  
LONG LAKE 473-7930  
WACONIA 442-2171

**ski-doo**  
**PARON MOTORS, INC.**  
633-1066  
1561 HWY 8  
NEW BRIGHTON, MN.

**TRI-K**  
Sports Inc.  
Polaris Sales & Service  
473-9386  
Long Lake, MN

  
**YAMAHA**  
Built for the fun of it.  
YOUR FULL LINE DEALER  
PARTS • SALES • SERVICE  
**WALDOCH**  
**SPORTS** Inc.  
13824 Lake Drive  
Forest Lake, MN 55025  
612-464-5776

**PULASKI'S  
PALACE**  
Maple Grove  
Co. Rd. 30 & Hwy. 152  
425-8175  
ENTERTAINMENT • FOOD • LIQUOR  
OPEN 7 DAYS A WEEK!!!

Complete Facilities for  
Banquets • Meetings • Weddings  
Reunions • Conventions  
DINING • DANCING • BOWLING  
DAILY & EVENING DINING  
Sunday Brunch 11 a.m. to 2 p.m.  
ON & OFF SALE LIQUOR  
FULL BAR SERVICE IN BALLROOM  
MEDINA MOTOR INN  
NEXT DOOR 478-9770

  
SEE  
THE INDY 400 QUICK.  
The Polaris Indy 400 has  
always had power and handling  
like you'll find in no other sled.  
And for 1988, it's sporting a new  
look— with a sleek new hood, inte-  
grated bumpers, new instruments  
with a resettable trip odometer  
and a color scheme that'll have  
jaws dropping. But as good as it  
looks sitting around, the Indy 400  
truly shines when it's moving.  
The Indy 400 has always been  
one hot sled. And this year, the  
looks alone are enough to blow  
everyone away.  
This snowmobile is for experienced riders only.  
**POLARIS**  
NOTHING BEATS THE WAY WE'RE BUILT.  
**POLARIS SNOWMOBILES**  
SALES & SERVICE

**ETZEL  
EXCAVATING**  
ROAD WORK • GRADING • EXCAVATING  
6403 Valley View Road, Hamel, MN 55340  
478-6974

**HI-10 SPORTS**  
NEW & USED PARTS & ACCESSORIES  
We buy used snowmobiles  
(612) 427-3410  
8110 Highway 10, Anoka, MN 55303

**PALACE - INN**  
  
\$1.00 OFF ANY LARGE PIZZA  
Lounge &  
Bottle Shop  
CRYSTAL, MN  
537-9921 535-5010

**STEVE THE SEWER MAN**  
Mains to 90 ft. \$45.00  
Tubs, Sinks, Toilets \$30.00  
1 Year Root Guarantee  
20 Years Experience  
572-1441  
Minneapolis & Northern Suburbs

**RUSTIC ROOST**  
DINING - LOUNGE - MOTEL  
Hwy. 2 - Iron River, WI 54847  
Iron River's snowmobile headquarters.  
Gateway to the Chequamegon Forest.  
Over 500 miles of groomed trails.  
Hundreds of miles of unplowed roads.  
Fine Dining - Comfortable Log Cabins  
Call for Reservation 715-372-4426

**MEDICAL CENTER  
PHARMACY**  
5640 W. Broadway  
Crystal, Minnesota 55428  
PHONE 537-8461

**SNO-STUFF** DEALERS ONLY - WE DO NOT SELL RETAIL  
**TROCHS ENTERPRISE INC.**  
"We Wish To Thank The  
NORTHWEST TRAIL ASSOCIATION For  
All The Fine Work You Have Done  
For Snowmobiling"  
HIGHWAY 12 EAST DELANO (612) 972-3395

**TOUSLEY HONDA YAMAHA  
DISCOUNT CENTER**  
  
3 and 4 WHEELERS  
WHITE BEAR LAKE, MINNESOTA  
(612) 483-8296

**SONNY'S**  
AUTO REPAIR & WELDING  
NO JOB TOO BIG OR SMALL  
HAMEL, MN  
478 - 6499

**HEINEN AND MASON INC.**  
425-2178  
MAIN STREET OSSEO

**WALDOCH**  
SPORTS Inc.  
13824 Lake Drive  
Forest Lake, MN 55025  
612-464-5776

**WALDOCH**  
SPORTS Inc.  
13824 Lake Drive  
Forest Lake, MN 55025  
612-464-5776

**WALDOCH**  
SPORTS Inc.  
13824 Lake Drive  
Forest Lake, MN 55025  
612-464-5776