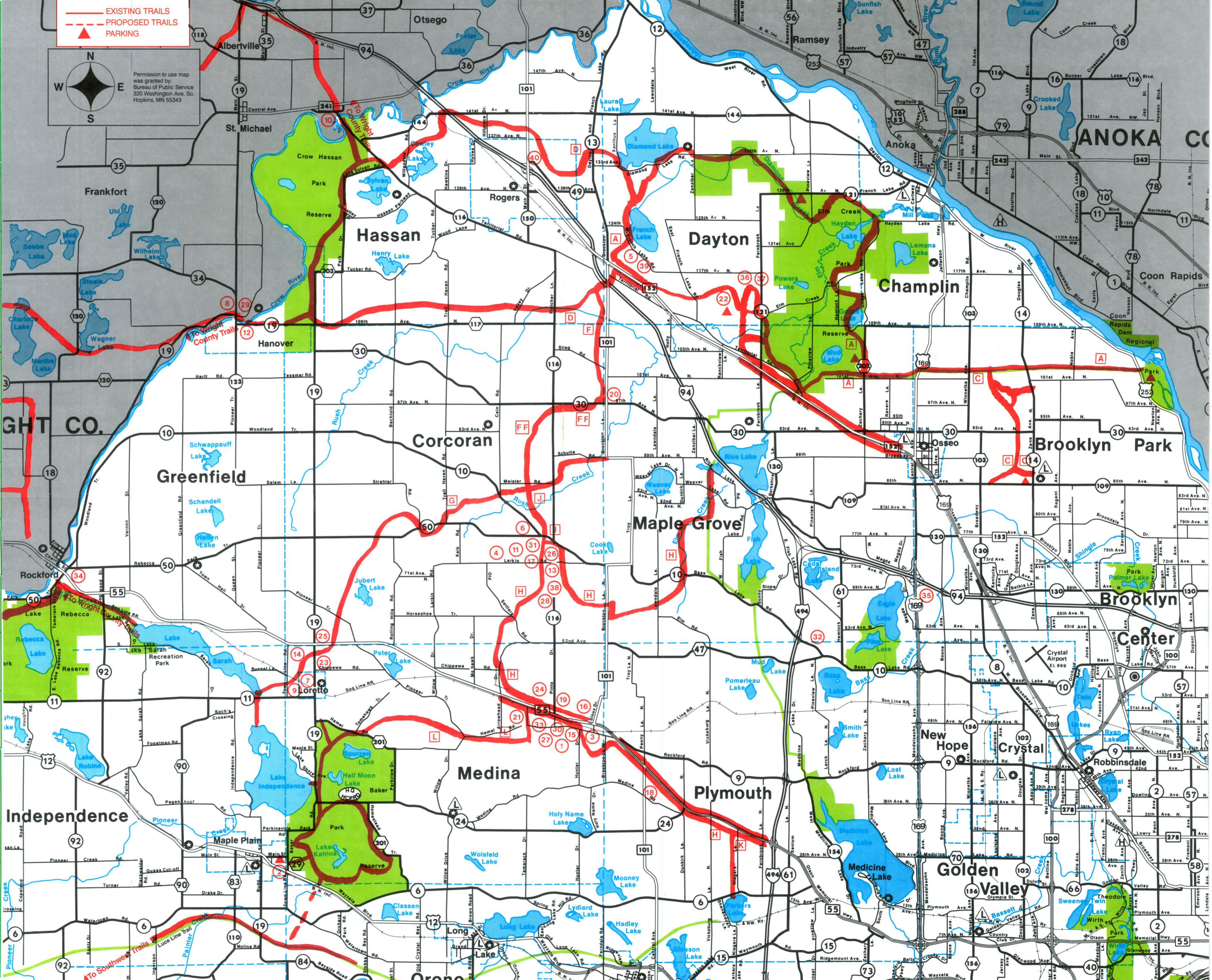


DES LAURIERS & SONS BUILDERS & REMODELERS HAMEL, MINNESOTA 55430 DONALD DES LAURIERS 612-478-6813	KEG 'n CORK Home of the \$3.99 T-Bone 479-2717 Lots of Parking
HIGHWAY 55 RENTAL & SALES, INC. Rental • Sales • Service 225 Highway 55, Hamel, MN 55340 612-478-6448	NEUMANN'S ENTERPRISE Backhoe, Bobcat, Welding & Snow Removal 20100 Larkin Road Corcoran, MN 55340 420-2547
CHOO CHOO BAR & RESTAURANT Open Daily Lunch & Dinner Comedy Fri. & Sat. Night Snowmobilers Welcome Loretto, MN 479-3585	FRITZ & JOYCE'S INC. 130 W. Railway Street Loretto, MN 55357 479-1788 Home of the Big Hamburger
HILLTOP BAR FOOD • LIQUOR 9 AM to 1 AM HANOVER 498-7697	MILLSIDE TAVERN AND SPORTING GOODS Snowmobile Parts Rupp Dealer ST. MICHAEL 497-2905
TOM THUMB Groceries • Gas • Deli Monday - Friday 5:00 - 11:00 Saturday & Sunday 6:00 - 11:00 Holidays 6:00 - 11:00 Corcoran 116 & Co. Rd. 10 420-2888	COUNTRY BAR & GRILL Hanover, MN • 612-498-8038 HOURS: Mon. - Sat. 9 a.m. to 1 a.m. Sun. Noon - Midnight WHEN THE COOK IS IN: Monday - Thursday 11 a.m. to 12 p.m. Friday 11 a.m. to 12 p.m. Saturday 8 a.m. to 12 p.m. Sunday 8 a.m. to 12 p.m.
MINNESOTA EXTERIORS INC. The Professional Servicing The Home siding • window door trim • gutters • shutters soft fascia • window door replacement 295 Highway 55 Free Estimates Minneapolis: 478-6001 St. Paul: 645-9989	WESTSIDE WHOLESALE TIRE REMINGTON - SUMMIT COOPER • STAR • MICHELIN 19925 75th Ave. No., Corcoran, MN 55340 612-420-2100
TOM THUMB Hwy. 101 & 55 Plymouth Open 7 Days a Week Cold Pop • Beer • Groceries • Gas Party Mart Liquors Next Door Beer • Wine • Liquors	Big Woods Saloon LIQUOR ON & OFF SHORT ORDERS FOOD Where Friends Meet LORETTO 477-9940
DITTER, INC. SINCE 1944 COOLING - HEATING 478-9558	Medina Entertainment Center and Rascals Bar & Restaurant Open 7 Days a Week for Breakfast, Lunch & Dinner 4 Miles West of 494 on Hwy. 55, Hamel, MN 55340 478-6661
OLSON'S UNION 76 & MERCANTILE Open 7 Days a Week • 5 a.m. to 10 p.m. Premium Gas Loretto, MN 612-479-1511	LEROY'S LIQUOR LIQUORS • FINE WINES COMPLETE LINE COLD BEERS & KEG BEER Corcoran Co. Rds. 10 & 116 420-3114
AK AUTO PARTS When the name is NAPA, the standard is quality Premium Gas & Diesel • Plugs • Oil Full & Self Service • Fuel Available CORCORAN, MN 612-420-2321 Mon-Fri 7 AM - 7 PM Sat 7 AM - 5 PM	MAYER MOBIL Mobil Gasoline (contains no ethanol) Premium Gas • Motor Oils Snacks • Restroom 762 Highway 55 • Hamel, MN 55340 612-478-6041 Locally Owned & Operated Since 1970
INN KAHOTS Snowmobilers Welcome • Fenced Snowmobile Parking • ON - OFF SALE • OPEN 7 DAYS A WEEK • LIGHTED PARKING • BIG SCREEN TV • ENTERTAINMENT ON WEEKENDS HELMET HEAD DRINK SPECIALS 45 Hamel Road, Hamel, MN 478-6070	Sundance GHT CO. FOOD & LIQUOR GOLF & BOWL Parking 15240 113th Ave. No. OSSEO - Phone 420-4800
PRINCETON'S MAPLE GROVE MALL LIQUORS SERVICE • SELECTION • COMPETITIVE PRICES 12790 - Bass Lake Road Maple Grove, MN • 559-3257	STOP-N-GO LIQUOR & VIDEO Mon. - Thur. 8 am to 8 pm Fri. & Sat. 8 am to 10 pm Sunday 12 noon to 6 pm 479-1696 Cty. Rd. 19 & Hwy. 55
Performance SNOWMOBILE SERVICE • Complete line of accessories • Service Polaris • Artic Cat • Yamaha 535-8011	RIVER ROAD TAVERN Food & Booze Downtown Hanover, MN Owners: Lee & Michele 498-7335
FORTIN HARDWARE CO. SPORTING GOODS • APPLIANCES COMPLETE SERVICE • SINCE 1919 155 Hamel Road, Hamel, MN 55340 612-478-6811 612-478-6980	Stanchion In The Heart of Uptown Corcoran WELCOME SNOWMOBILERS TO CORCORAN, U.S.A. On and Off Liquor and Beer Stop in and say "where in the hell am I?" Pizza & Sandwiches 420-2582
DEHN ENTERPRISES snowmobile service & parts POLARIS — ARCTIC CAT 11281 Fernbrook Lane Maple Grove, MN 55369 Bus: 612-420-4084 Home: 612-427-8391	Country Pizza Parlor SOUP • ICE CREAM SUBS • PASTRIES Hours: 10 AM - 10 PM Mon. - Thur. 10 AM - 12 AM Fri. & Sat. 12 PM - 10 PM - Sunday 420-5755 Call ahead & we will have your order ready for you.
Geldert's Mfg. Inc. Pontoon Furniture BOAT SEATS Refurbishing and repair of old pontoons 11760 Troy Lane No. Dayton, MN 55369 Directions from Main St., Osseo - 6 mi. W. on Henn. Co. 81 Directions from Main St., Rogers - 3 1/2 mi. E. on Henn. Co. 81 612-428-8000	Country Bar & Grill Hanover, MN • 612-498-8038 HOURS: Mon. - Sat. 9 a.m. to 1 a.m. Sun. Noon - Midnight WHEN THE COOK IS IN: Monday - Thursday 11 a.m. to 12 p.m. Friday 11 a.m. to 12 p.m. Saturday 8 a.m. to 12 p.m. Sunday 8 a.m. to 12 p.m.
Super 8 - Rogers 21130 134th Avenue Rogers, MN 55374 612-428-4000 Show us this map and receive a 10% discount. America's Finest Economy Lodging.	Country Bar & Grill Hanover, MN • 612-498-8038 HOURS: Mon. - Sat. 9 a.m. to 1 a.m. Sun. Noon - Midnight WHEN THE COOK IS IN: Monday - Thursday 11 a.m. to 12 p.m. Friday 11 a.m. to 12 p.m. Saturday 8 a.m. to 12 p.m. Sunday 8 a.m. to 12 p.m.



Henepin County
Northwest Trails Of
Welcome To The



1992-1993

SNOWMOBILE OPERATING HOURS & EQUIPMENT RESTRICTIONS FOR THE FOLLOWING CITIES*:		
CITY	OPERATING HOURS	EQUIPMENT RESTRICTIONS
Brooklyn Park	8 AM to 11 PM Monday - Thursday No Restrictions Friday - Sunday 11 PM	Standard Equipment Plus Red or Blaze Flag 6' from Ground
Champlin	8 AM to 11 PM Sunday - Thursday 8 AM to 1 AM Friday and Saturday	Standard Equipment Plus Red or Blaze Flag 6' from Ground
Corcoran	7 AM to 12 AM Monday - Sunday	Standard Equipment
Dayton	7 AM to 11 PM Monday - Thursday 7 AM to 1 AM Friday - Sunday	Standard Equipment
Maple Grove	7 AM to 11 PM Sunday - Thursday 7 AM to 1 AM Friday & Saturday	Standard Equipment
Medina	No Restrictions	Standard Equipment
Osseo	7 AM to 11 PM Monday - Sunday	Standard Equipment
Plymouth	No Restrictions	Standard Equipment

STANDARD EQUIPMENT: Headlight, tail light, reflectorized material at least 16 square inches, muffler, "deadman" throttle.
*Subject to change.

Enjoy the Beauty of a Ride Through Hennepin Parks

More than 50 miles of groomed, marked snowmobile trails wind through the beautiful natural setting of eight Hennepin Parks facilities, and provide access to the network of public trails that surrounds the metro area. We hope you enjoy your trip through this natural beauty, and ask that you do your part in making the experience enjoyable for others. Please comply with the 30 m.p.h. speed limit, and use designated trails only. Hennepin Parks trails are open from 8 a.m. to 11 p.m. Sunday through Thursday, and from 8 a.m. to 1 a.m. Friday and Saturday.

For more information about snowmobiling and other recreation opportunities in Hennepin Parks, address your questions to:
Hennepin Parks
12615 County Road 9
Plymouth, MN 55441-1248
Or you may call (612) 559-9000

"SNOWMOBILING IS FUN FOR EVERYONE"

The advertisers on this map have contributed generously to help defray this cost. They are worthy of your patronage.

Minnesota Law 85.018. Subd. 5. Snowmobile Trail Use:
From December 1 to April 1 in any year no use of a motorized vehicle other than a snowmobile, unless authorized by permit, lease or easement shall be permitted on a trail designated for use by snowmobiles.

This is a Grants-in-Aid Trail System funded by the Department of Natural Resources (D.N.R.). The D.N.R. does not endorse any advertisers on this map. No reproduction in whole or part with out written permission from Northwest Trails Association.

THANK YOU FROM THE NORTHWEST TRAILS ASSOCIATION

NORTHWEST TRAILS ASSOCIATION WELCOMES YOU TO RIDE OUR TRAIL

For your safety and enjoyment please observe the following:

- Do not wander off the trails. You have permission to ride the marked trails only.
- Do not damage any trees, shrubs, etc.
- Do not disturb wildlife or any livestock.
- Deposit all trash in barrels provided.
- Be careful when crossing roadways and cross only at 90 degrees.
- Remember that lakes are never completely safe due to river channels and springs eroding the ice away from the underside.
- Carry a compass when out in the woods or at night.
- Remember all snowmobilers are judged by the actions of a few. Please do not cause any disturbances or damage any property.
- Where trails follow public roads, obey all traffic laws and regulations, such as keep to the right, dim lights, etc.
- Snowmobiles are prohibited from operating on certain public streets in many towns. When in these areas watch for marked streets or check with city officials.

RIDE SAFELY AND PLEASE STAY ON TRAILS

POLARIS
Believe It.
LARGE INVENTORY
CLOTHING • SALES • SERVICE • PARTS
SNOWMOBILES/ATV'S
FINANCING AVAILABLE

FASTEST GROWING POLARIS DEALER IN THE U.S.

11124 Hwy 55 Plymouth 3/4 Mile West of Hwy 169

544-7376

Berthiaume - Commercial Lawn & Snow, Inc.

Complete Lawn Care & Snowplowing
Bonded • Insured
5056 Hwy. 101 N., Medina, MN 55340
Joe, Steve, Shawn
478-9431

HELP KEEP YOUR SNOWMOBILE TRAIL SYSTEM ALIVE... JOIN NORTHWEST TRAILS ASSOCIATION

Meetings are held the 1st Tuesday of each month at 7:30 p.m. in the party room of the Medina Entertainment Center.

Please Support Our Advertisers

SCHARBER AND SONS

SALES & SERVICE
428-4107
ROGERS, MN

JOIN THE CAT ATTACK.

Fowler Electric Company

2208 West 94th Street
Bloomington, MN 55431
612-884-5401

COMET CLUTCHES Wiseco
WATTS LINE PISTONS
USA 1-800-843-1424

BAUER TRUCKING CO.

17751 - 63rd Avenue
Maple Grove, Minnesota 55311
BOB BAUER - 559-2721

NORTHWAY SPORTS

Polaris
LAKE DRIVE
CIRCLE PINES, MN
786-4379

MEDINA ENTERTAINMENT CENTER

RASCALS
BAR AND RESTAURANT

Banquets Weddings Anniversaries Meetings Seminars Reunions
Ballroom Checkers Bowling Game Room 4 Big Screen TVs Full Bar Service Banquet Rooms for 10-1,000 20,000 Sq. Ft. of Display Area

Free Parking
Must be 18 Years or Older with Proper Minnesota Photo I.D. to be Admitted to Ballroom
5 Miles West of 494 on Hwy 55 • Hamel, MN • (612) 478-9951
Medina Red Carpet Inn • Hamel, MN • (612) 478-9970

ROASTING CORCORAN LOCKER PLANT

Retail Meats & Sausages
Homesmoked Hams & Bacon
Beef Sides & Quarters

612-420-2555

20121 County Road #10 Corcoran, MN 55340
JOE ANDRES 420-3764
BEN ANDRES 420-2475

R & W WELDING & MACHINE, INC.

HELI-ARC WELDING
612-425-5221
417 County Road 81 Service Road
Osseo, MN 55369
FAX: 612-425-9857

Mike Rooney Gary Current

HAMEL BUILDING CENTER

18710 Highway 55
Plymouth - Hamel
For All Your Building Needs
478-6601

ski-doo

SALES • PARTS • SERVICE
CLOTHING • FINANCING

OSSEO SPORTS

DOWNTOWN OSSEO
425-4159

McKEE INSURANCE AGENCY

Home • Auto • Business • Life
1421 E. WAYZATA BLVD.
WAYZATA, MN 55391
MIKE McKEE - 476-0933

PULASKI'S PALACE

Maple Grove
Co. Rd. 30 & Hwy. 152
425-8175

ENTERTAINMENT • FOOD • LIQUOR
OPEN 7 DAYS A WEEK!!!!

MODEL LANDSCAPING

"WHERE QUALITY COMES FIRST"
KEN REMER
428-4140
23415 Wood Lane Rogers, MN 55374

HI-10 SPORTS

NEW & USED PARTS & ACCESSORIES
We buy used snowmobiles
(612)427-3410
8110 Highway 10, Anoka, MN 55303

Buy this machine for it's advanced engineering, precision handling and incredible value. We'll throw in the mean streak for free.

Sit behind the handlebars on one of the best rides on the snow.

EXT 550 EFL

ARCTIC CAT
World Class Snowmobiles

Complete service, parts and accessories.
784-1104

rapid sport center
BLAINE
10135 Central Ave. N.E. • Blaine, MN 55434

SONNY'S AUTO REPAIR & WELDING

NO JOB TOO BIG OR SMALL
HAMEL, MN
478-6499

GROTH SEWER & WATER

Septic Systems • Excavating • Additions
775 TOWER DRIVE
HAMEL, MN 55340
612-478-6712

LARRY GROTH

Lawn King, Inc.

Complete Landscape Services
DAVID REMER
612-420-2909
7555 County Road 116 • Corcoran, MN 55340

HAMEL SNO-RUNNERS

— Snowmobilers Invited —
Meetings 1st Monday of each month.
Hamel American Legion
Trail rides on marked trails. Club Trips

Bill 420-3634 Jerry 478-6879

TRI-K Sports Inc.

Polaris Sales & Service
479-3719
Maple Plain, MN

WALDOCH SPORTS

612-464-5776

PARTS • SALES • SERVICE • FINANCE • ACCESSORIES
YAMAHA
The Power To Satisfy.

WARNER OUTDOOR
LAWN / SPORTS / PRO-TURF

7520 LYNDALE AVE. SO. • RICHFIELD, MN
612-869-7533
POLARIS
MASTER SERVICE DEALER, PARTS, & SALES

Evergreen Electric Inc.

RESIDENTIAL
COMMERCIAL — INDUSTRIAL
536-1122
or
572-8391 - Penny Scholl

When there's a tough job to be done...

THE TUCKER SNO-CAT
(612) 888-7372

Put the Cat out!
(The Tucker SNO-CAT... The world's leading, 4-track snow vehicle!)

TRACK, INC., P.O. Box 20541,
Bloomington, MN 55420 (612) 888-7372
Your Exclusive Midwest Tucker Distributor

Yes, Snow Sizzles.

INDY 440. You can heat snow right up to the sizzling point—with the Indy 440. It's one flat-out fun time with its liquid-cooled, twin-cylinder 440 powerplant. And its new Improved Transfer (ITS) rear suspension gives you the sure-footed handling you want. Don't wait. These sizzlers aren't going to stay put for long.

©1992 Polaris Industries L.P.

POLARIS Believe It.

SALES AND SERVICE
HEINEN AND MASON INC.
425-2178
MAIN STREET OSSEO

WALDOCH SPORTS

612-464-5776

PARTS • SALES • SERVICE • FINANCE • ACCESSORIES
YAMAHA
The Power To Satisfy.

rapid sport center

COON RAPIDS
3050 Coon Rapids Blvd.
Coon Rapids, MN 55433

SALES 612-421-8701
PARTS 612-421-8360
TOLL FREE 1-800-527-2743

Randy Sicheneder
2593 Hutchinson Road
Watertown, MN 55388
SICHENEDER CONSTRUCTION
446-9102 or 955-3931

JAN SPECIALTY ENGINES

Jack Machula
3568 Pinto Drive
Hamel, MN 55340
FACTORY FRESH VP RACING FUEL
(612) 478-9837

ETZEL EXCAVATING

ROAD WORK • GRADING • EXCAVATING
6403 Valley View Road, Hamel, MN 55340
478-6974

IT'S NEW! AND WE'VE GOT IT!
YAMAHA
The Power To Satisfy.
HOPKINS HITCHING POST
Suzuki • Yamaha • Honda • Ski-Doo
10% Parts Discount to all Club Members
2011 Mainstreet, Hopkins, MN 55343
933-9649

Still Nothing Like It

Phazer II

Buy • Sell Trade Bank Financing

rapid sport center

COON RAPIDS
3050 Coon Rapids Blvd.
Coon Rapids, MN 55433

YAMAHA
The Power To Satisfy.

YAMAHA
The Power To Satisfy.