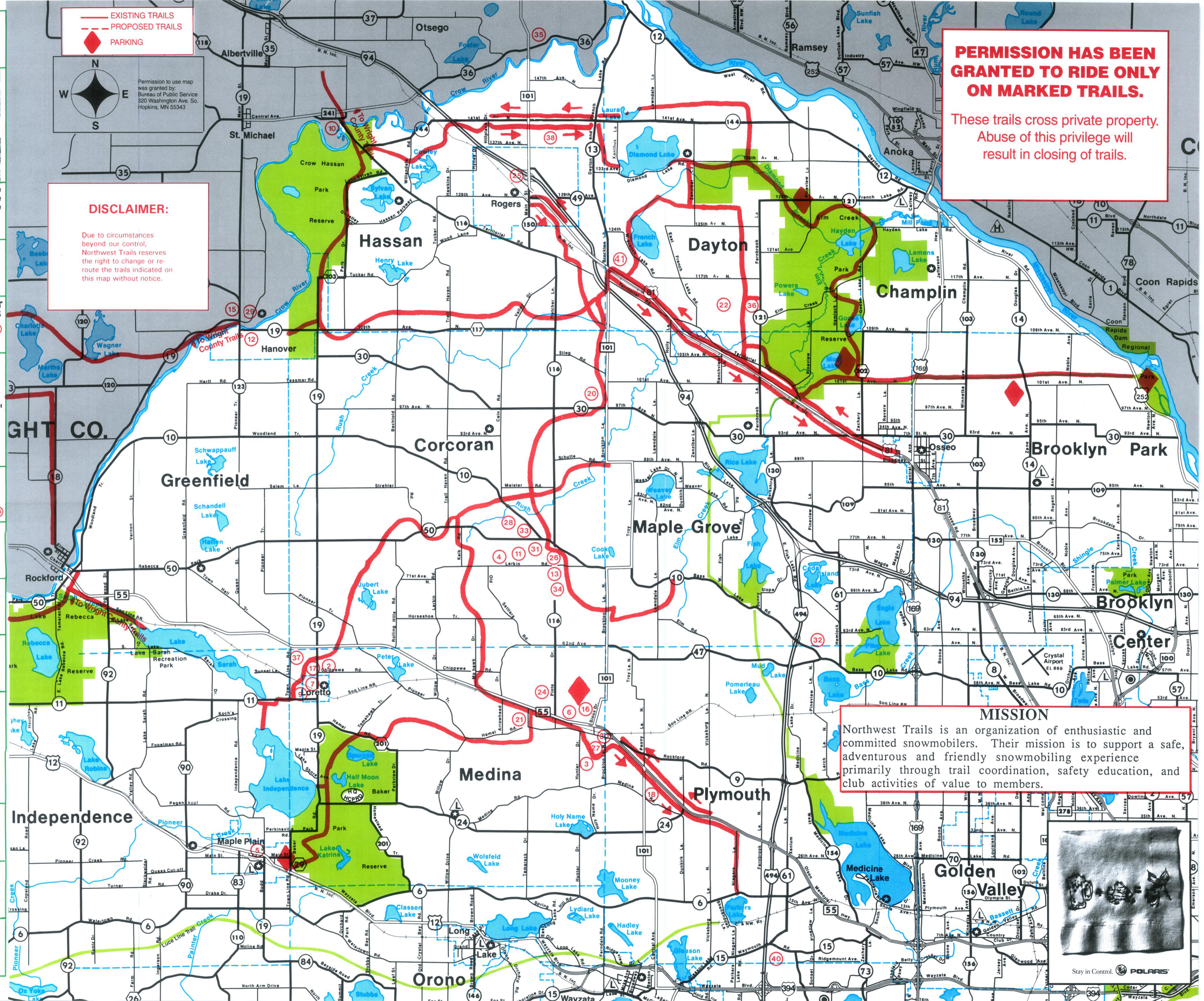


Northwest Trails Association Membership Form

Name _____ Dues: \$20.00 per year
 Address _____ City _____ St _____ Zip _____
 Telephone _____ Date _____ MRM #/Sponsors Name _____
 Mail To: Northwest Trails
 PO Box 444
 Osseo, MN 55369

Meetings held 1st Tuesday of each month at 7:30 in the Medina Entertainment Center

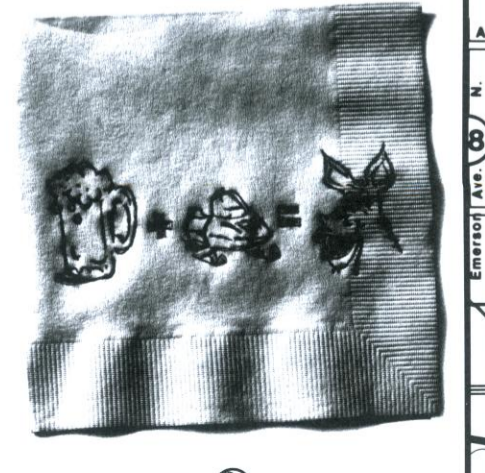
<p>DES LAURIERS & SONS INC. BUILDERS & REMODELERS HAMEL, MINNESOTA 55430 DONALD DES LAURIERS</p>	<p>OLSON'S MERCANTILE • Gas • Convenience • Groceries/Dairy • Greeting Cards • Instant Cash Machine • Propane • Water Softener Salt • Gifts • Film Developing • Deli • Magazines</p>
<p>MAYER MOBIL Mobil Gasoline • Premium Gas • Motor Oils • Snacks • Restroom 762 Highway 55 • Hamel, MN 55340 612-478-6041 Locally Owned & Operated Since 1970</p>	<p>FRITZ & JOYCE'S INC. 130 W. Railway Street Loretto, MN 55357 479-1788 Home of the Big Hamburger</p>
<p>CHOO CHOO BAR & RESTAURANT Open Daily Lunch & Dinner Comedy Fri. & Sat. Night Snowmobilers Welcome Loretto, MN 479-3565</p>	<p>MILLSIDE TAVERN FOOD • LIQUOR Located on the bank of the Crow River ST. MICHAEL 497-2905 BEST BURGERS ON THE CROW RIVER</p>
<p>HILLTOP BAR FOOD • LIQUOR 9 AM to 1 AM HANOVER 498-7697</p>	<p>TOM THUMB Groceries • Gas • Deli Monday - Friday 5:00 - 11:00 Saturday & Sunday 6:00 - 11:00 Holidays 6:00 - 11:00 Corcoran 116 & Co. Rd. 10 420-2888</p>
<p>Mik - Patti's Grill & Bar Hanover, MN • 612-498-8038 HOURS: Mon - Sat 9 a.m. to 1 a.m. Sun, Noon - Midnight WHEN THE COOK IS IN Monday - Thursday 11 a.m. to 10 p.m. Friday 8 a.m. to 12 p.m. Saturday 8 a.m. to 12 p.m.</p>	<p>FAMILY BAR & GRILL & SPORTS CENTER • Open 7 Days a week • Daily and Nightly Food Specials • Big Screen Satellite TV • Homemade Soups & Chili • Full Service Bar & Pulltaps • Plenty Arcade Entertainment</p>
<p>TOM THUMB Hwy. 101 & 55 Plymouth Open 7 Days a Week Cold Pop • Beer • Groceries • Gas Party Mart Liquors Next Door Beer • Wine • Liquors</p>	<p>Sundance 420-4800 or 420-4700 "All Season Family Sports Center" • Newly Remodeled Sports Bar & Restaurant • Daily Drink Specials • New Expanded Menu • Open Everyday from 10 a.m. to 1 a.m. • Karaoke Friday and Saturday Nights • 24 Lane Bowling Center • NEW Lighted & Visible Snowmobile Parking Area 15240 113th Ave N. Maple Grove</p>
<p>DITTER INC. CARRIER SINCE 1946 COOLING - HEATING 478-9558</p>	<p>Lighted & Fenced Snowmobile Parking COUNTY RD 30 & HIGHWAY 101 MAPLE GROVE, MN 55311 420-2588 Snowmobilers Welcome!</p>
<p>NEUMANN'S ENTERPRISE Backhoe, Bobcat, Welding & Snow Removal 20100 Larkin Road Corcoran, MN 55340 420-2547</p>	<p>Countryside Cafe 842 Hwy. 55 Hamel, Minn. 55340</p>
<p>AK AUTO PARTS When the name is NAPA, the standard is quality Premium Gas & Diesel • Plugs • Oil Self Service • Fuel Available CORCORAN, MN 612-420-2321 Mon-Fri 7 AM - 6 PM, Sat 8 AM - 5 PM</p>	<p>FARMERS HAMEL OFFICE 478-6611 CORCORAN OFFICE 420-2025 MEMBER F.D.I.C.</p>
<p>INN KAHOTS Snowmobilers Welcome • Fenced Snowmobile Parking • ON - OFF SALE • OPEN 7 DAYS A WEEK • LIGHTED PARKING • 5 TELEVISIONS • ENTERTAINMENT ON WEEKENDS HELMET HEAD DRINK SPECIALS 45 Hamel Road, Hamel, MN 478-6070</p>	<p>RIVER ROAD Food & Booze Downtown Hanover, MN Owner: Michele 498-7335</p>
<p>PRINCETON'S LIQUORS 12790 Bay Lake Road (Off & Sun Lake Rd.) Maple Grove, MN 55369 612-889-3259 Joel & Sue Princeton Owners</p>	<p>Stanchion In The Heart of Uptown Corcoran WELCOME SNOWMOBILERS TO CORCORAN, U.S.A. On and Off Liquor and Beer Stop in and say "where in the hell am I?" Pizza & Sandwiches 420-2582</p>
<p>PRECISION LINE Motorsports Snowmobile parts, accessories and consignment sales Open 7 days a week, 1 Mile North on Hwy. 101 428-3863</p>	<p>Country Pizza Parlor SOUP & SUBS & ICE CREAM PASTRIES Hours: 10 AM - 10 PM Mon-Thur, 10 AM - 11 PM Fri. & Sat., 12 PM - 10 PM Sunday 7565 County Road 116 Corcoran, MN 55340 (612) 420-9755 5986 Main Ave. N.E. Albertville, MN 55301 (612) 487-9584 Call ahead & we will have your order ready for you.</p>
<p>ENGINEERING REPRO SYSTEMS (612) 473-2902 13700 1st Ave. NO. PLYMOUTH MINN 55441 ARCHITECTURAL, ENGINEERING, CAD, DRAFTING EQUIPMENT, SUPPLIES, MICROFILMING and REPRODUCTIONS MN WATS 1-800-537-3776 FAX (612) 473-3763</p>	<p>Dehn Power Sports, Inc. Maple Grove MN 55369 (612)420-2416</p>
<p>Big Woods Saloon LIQUOR ON & OFF SHORT ORDERS FOOD Where Friends Meet LORETTO 479-3413</p>	<p>Nature's Hideaway Restaurant • Lounge • Catering 21431 141st Ave. No. • P.O. Box 95 Rogers, MN 55374-0095 (612) 428-3013 Fax (612) 428-3010</p>
<p>DAYTONA MARKET CONOCO Cash Machine • Premium Fuel • Groceries • Lottery Injector & 2 Cycle Oil • Restrooms All Major Credit Cards 19000 City Rd 81 • Dayton 428-2221</p>	<p>Brewster's 479-6987 HWY. 12 MAPLE PLAIN THE BEST SALES & SERVICE TEAM FOR YOUR SKI-DOO SNOWMOBILE!</p>



PERMISSION HAS BEEN GRANTED TO RIDE ONLY ON MARKED TRAILS.
 These trails cross private property. Abuse of this privilege will result in closing of trails.

DISCLAIMER:
 Due to circumstances beyond our control, Northwest Trails reserves the right to change or re-route the trails indicated on this map without notice.

MISSION
 Northwest Trails is an organization of enthusiastic and committed snowmobilers. Their mission is to support a safe, adventurous and friendly snowmobiling experience primarily through trail coordination, safety education, and club activities of value to members.



Stay in Control. POLARIS

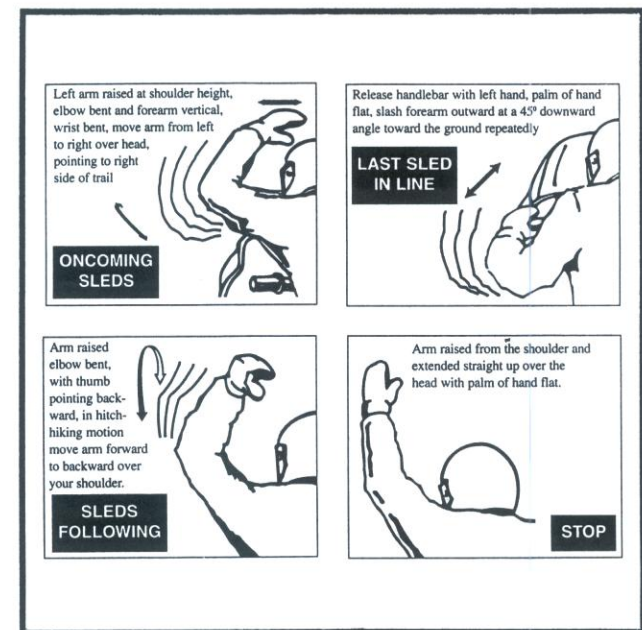
Welcome To The Snowmobile Trails Of Northwest Hennepin County



1998 - 8661

SNOWMOBILE OPERATING HOURS & EQUIPMENT RESTRICTIONS FOR THE FOLLOWING CITIES*		
CITY	OPERATING HOURS	EQUIPMENT RESTRICTIONS
Brooklyn Park	8 AM to 11 PM Monday - Thursday No Restrictions Friday - Sunday	Standard Equipment Plus Red or Blaze Flag 6' from Ground
Champlin	8 AM to 11 PM Sunday - Thursday 8 AM to 1 AM Friday and Saturday	Standard Equipment
Cocoran	7 AM to 12 AM Monday - Sunday	Standard Equipment
Dayton	7 AM to 11 PM Monday - Thursday 7 AM to 1 AM Friday - Sunday	Standard Equipment
Hassan	7 AM to Midnight except when returning from or departing to a county right of way or designated trail. Speed limit 30 mph within the township right of way.	Standard Equipment
Maple Grove	7 AM to 11 PM Sunday - Thursday 7 AM to 1 AM Friday & Saturday	Standard Equipment
Medina	No Restrictions	Standard Equipment
Osseo	7 AM to 11 PM Monday - Sunday	Standard Equipment
Plymouth	7 AM to 10 PM All Days. No riding on streets.	Standard Equipment

STANDARD EQUIPMENT: Headlight, tail light, reflectorized material at least 16 square inches, muffler, "deadman" throttle.
*Subject to change.



"SNOWMOBILING IS FUN FOR EVERYONE"

The advertisers on this map have contributed generously to help defray this cost. They are worthy of your patronage.

Minnesota Law 85.018, Subd. 5. Snowmobile Trail Use:

From December 1 to April 1 in any year no use of a motorized vehicle other than a snowmobile, unless authorized by permit, lease or easement shall be permitted on a trail designated for use by snowmobiles.

This is a Grants-in-Aid Trail System funded by the Department of Natural Resources (D.N.R.). The D.N.R. does not endorse any advertisers on this map. No reproduction in whole or part with out written permission from Northwest Trails Association.

THANK YOU FROM THE NORTHWEST TRAILS ASSOCIATION

NORTHWEST TRAILS ASSOCIATION WELCOMES YOU TO RIDE OUR TRAIL

For your safety and enjoyment please observe the following:

- Do not wander off the trails. You have permission to ride the marked trails only.
- Do not damage any trees, shrubs, etc.
- Do not disturb wildlife or any livestock.
- Deposit all trash in barrels provided.
- Be careful when crossing roadways and cross only at 90 degrees.
- Remember that lakes are never completely safe due to river channels and springs eroding the ice away from the underside.
- Carry a compass when out in the woods or at night.
- Remember all snowmobilers are judged by the actions of a few. Please do not cause any disturbances or damage any property.
- Where trails follow public roads, obey all traffic laws and regulations, such as keep to the right, dim lights, etc.
- Snowmobiles are prohibited from operating on certain public streets in many towns. When in these areas watch for marked streets or check with city officials.

ARCTIC CAT
WORLD CLASS SNOWMOBILES

- * Open 7 Days a Week
- * New and Used Snowmobiles
- * Catmaster Service
- * Complete line of Clothing, Parts and Accessories

North Country OSSEO MN

"Performance for the dedicated sports person"

(612) 425-4867
West of Hwy 169 on Cnty Rd 81
Osseo, Minnesota

THINK SNOW

Stay on the Trails or we will lose them.

OSSEO SPORTS

DOWNTOWN OSSEO
425-4159

Since 1955

SALES • PARTS • SERVICE
CLOTHING • FINANCING

R & W WELDING & MACHINE, INC.

HELI-ARC WELDING
612-425-5221
417 County Road 81 Service Road
Osseo, MN 55369
FAX: 612-425-9857

Mike Rooney Gary Current

True Value

HAMEL BUILDING CENTER

18710 Highway 55
Plymouth - Hamel
For All Your Building Needs
478-6601

ski-doo
ENGINEERED FOR THE WAY YOU RIDE!

'99

HAPPY TRAILS!

See the new Vmax's on display.

We have Vmax 500's and 600's in stock.

YAMAHA
The Power to Satisfy.

SALES 612-421-8701
PARTS 612-421-8360
TOLL FREE 1-800-527-2743

Buy • Sell Trade Bank Financing

rapid sport center

COON RAPIDS
3050 Coon Rapids Blvd.
Coon Rapids, MN 55433

WARNER OUTDOOR
POWERSPORTS / PRO-TURF

9521 Garfield Ave. S. • Bloomington, MN 55420
1 Block East of Lyndale
612-884-2111

POLARIS
MASTER SERVICE DEALER, PARTS, & SALES

SNOWMOBILE TOURISM...

ISMA

...WORKS FOR AMERICA!

POLARIS
Believe It!
LARGE INVENTORY
PARTS • CLOTHING • ACCESSORIES

Metro Area's Highest Volume Polariss Sales
11124 Hwy 55 • Plymouth • 3/4 Mile West of Hwy 169

SNOWMOBILES/ATV'S
WATERCRAFT
SALES • SERVICE • FINANCING

Store Hours: M-F 9-8:30
Sat 9-6
Sun 10-4

612-544-7376

Outpost
HUNT & SPORTS INC.

SCHARBER & SONS
Since 1916
SALES & SERVICE

ROGERS 428-4107 LONG LAKE 473-5634

ARCTIC CAT
WORLD CLASS SNOWMOBILES

Fowler ELECTRIC COMPANY

9054 Grand Ave. S.
Bloomington, MN 55420
612-884-5401 • Nat. 800-843-1424

Dealers:
Call For Our New Catalog

WISECO CAMOPLAST TRACKS
COMET SNOWMOBILE STUDES & ACCESSORIES
FAST-TRAC SNOWMOBILE STUDES & ACCESSORIES
NGK SPARK PLUGS

"Parts for New and Old Since 1968"

ANCHOR PAPER

AN EMPLOYEE OWNED COMPANY. AN EQUAL OPPORTUNITY EMPLOYER.
WHOLESALE DISTRIBUTOR FOR FINE PRINTING PAPERS, COPIER PAPERS, RECYCLED PAPERS AND PACKAGING MATERIALS, PACKAGING EQUIPMENT AND SUPPLIES, JANITORIAL SUPPLIES.

298-1311 OFFICE • 298-1312 CITY DESK • (800)652-9755 TOLL FREE
480 BROADWAY, ST. PAUL, MN 55101

SNOWMOBILE TOURISM...

ISMA

...WORKS FOR AMERICA!

BERTHAUME COMMERCIAL LAWN & SNOW

Complete Lawn Maintenance
Snow Removal • Underground Sprinklers

Joe Berthume President 5065 Hwy 101 N Hamel, MN 55340

(612) 478-9431 (612) 478-6177

SONNY'S AUTO REPAIR & WELDING

NO JOB TOO BIG OR SMALL
HAMEL, MN
478 - 6499

When there's a tough job to be done...

THE TUCKER SNO-CAT
(612) 888-7372

Put the Cat out!
(The Tucker SNO-CAT... The world's leading, 4-track snow vehicle!)

TRACK, INC., P.O. Box 20541, Bloomington, MN 55420 (612) 888-7372
Your Exclusive Midwest Tucker Distributor

ETZEL EXCAVATING

ROAD WORK • GRADING • EXCAVATING
6403 Valley View Road, Hamel, MN 55340

478-6974

ski-doo
ENGINEERED FOR THE WAY YOU RIDE!

HOPKINS HITCHING POST
10% Parts Discount to all Club Members
350 17th Ave N, Hopkins, MN 55343
933-9649

For Club information
Call 257-7205

Loretto SNO-BIRDS
P.O. Box 272
Loretto, MN 55357

ANCHOR PAPER

AN EMPLOYEE OWNED COMPANY. AN EQUAL OPPORTUNITY EMPLOYER.
WHOLESALE DISTRIBUTOR FOR FINE PRINTING PAPERS, COPIER PAPERS, RECYCLED PAPERS AND PACKAGING MATERIALS, PACKAGING EQUIPMENT AND SUPPLIES, JANITORIAL SUPPLIES.

298-1311 OFFICE • 298-1312 CITY DESK • (800)652-9755 TOLL FREE
480 BROADWAY, ST. PAUL, MN 55101

SNOWMOBILE TOURISM...

ISMA

...WORKS FOR AMERICA!

ANCHOR PAPER

AN EMPLOYEE OWNED COMPANY. AN EQUAL OPPORTUNITY EMPLOYER.
WHOLESALE DISTRIBUTOR FOR FINE PRINTING PAPERS, COPIER PAPERS, RECYCLED PAPERS AND PACKAGING MATERIALS, PACKAGING EQUIPMENT AND SUPPLIES, JANITORIAL SUPPLIES.

298-1311 OFFICE • 298-1312 CITY DESK • (800)652-9755 TOLL FREE
480 BROADWAY, ST. PAUL, MN 55101

SNOWMOBILE TOURISM...

ISMA

...WORKS FOR AMERICA!

McKEE & ANDREWS INSURANCE AGENCY INC.

HOME AUTO BUSINESS LIFE
SNOWMOBILE BOAT

1421 E. WAYZATA BLVD.
WAYZATA, MN 55391
MIKE McKEE -- 476-0933

Lawn King, Inc.

Complete Landscape Services
DAVID REMER
612-420-2909
7555 County Road 116 • Corcoran, MN 55340

POLARIS RIDE THE BEST

SNOWMOBILES • ATV'S • PWC'S
VICTORY MOTORCYCLES • RANGER'S

Your Complete Polariss Dealer!!

Serving the Twin Cities since 1963
7 Polariss Master Technicians
'97 - '98 Outstanding Dealer of the Year
Courteous Sales & Service Dept.
Newly Remodeled Showroom
In-House Financing

HEINEN & MASON

33 CENTRAL AVENUE
OSSEO, MINNESOTA 55369
612.425.2178

Medina ENTERTAINMENT CENTER

Rascals Restaurant
Patio & Bar

- Bowling Lanes
- Darts
- Cosmic Game Room

Dancing Every
Tuesday, Thursday,
Friday & Saturday

- Banquets
10 - 1600 guests

4 Miles West of 494 on Hwy 55
500 Hwy 55 • Medina, MN
(612) 478-6661
The MEDINA INN • (612) 478-9770

PULASKI'S PALACE

Maple Grove
Co. Rd. 30 & Co. Rd. 81
425-8175

ENTERTAINMENT • FOOD • LIQUOR

OPEN 7 DAYS A WEEK!!!

HAMEL SNO-RUNNERS

— Snowmobilers Invited —
Meetings 1st Monday of each month.
Hamel American Legion
Trail rides on marked trails. Club Trips

P.O. Box 190
Hamel, MN 55340

TRI-K Sports Inc.

Polariss Sales & Service
479-3719
Maple Plain, MN

WALDOCH SPORTS

612-464-5776

PARTS • SALES • SERVICE • FINANCE • ACCESSORIES

YAMAHA
www.waldochsports.com

ROASTING & TOASTING CORCORAN LOCKER PLANT

Retail Meats & Sausages
Homesmoked Hams & Bacon
Beef Sides & Quarters

612-420-2555

20121 County Road #10 Corcoran, MN 55340
JOE ANDRES
BEN ANDRES

MODEL LANDSCAPING

"WHERE QUALITY COMES FIRST"

KEN REMER
428-4140
23415 Wood Lane Rogers, MN 55374

SNOWMOBILE TOURISM...

ISMA

...WORKS FOR AMERICA!

WALDOCH SPORTS

612-464-5776

PARTS • SALES • SERVICE • FINANCE • ACCESSORIES

YAMAHA
www.waldochsports.com

L & L Repair
Loretto, Minnesota

Lawrence J. Leaver
1-888-308-SLED (7533)
Local (612) 479-6151
Cell (612) 799-5498
Pager (612) 969-0785

Snowmobile Parts and Accessories

POLARIS

How to feel truly alive in the dead of winter.

The Lindy XLT Special boasts a liquid-cooled 597cc triple engine. Rear Position Sensitive Fox Gas Show. And comes with a two-year engine warranty. Get ready for the ride of your life. **RIDE THE BEST.**

© 1998 Polariss Industries, Inc.