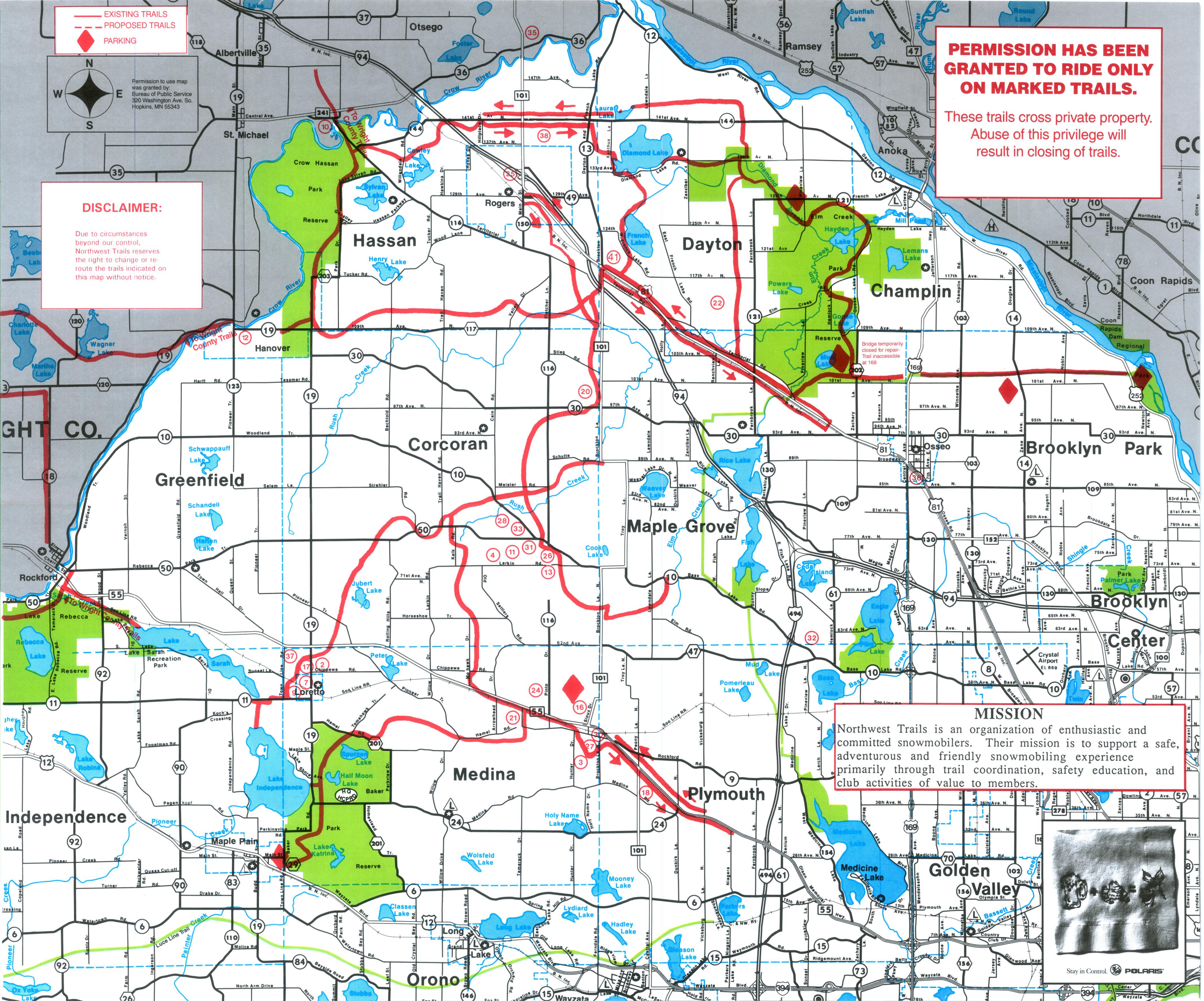


Northwest Trails Association Membership Form Dues: \$20.00 per year

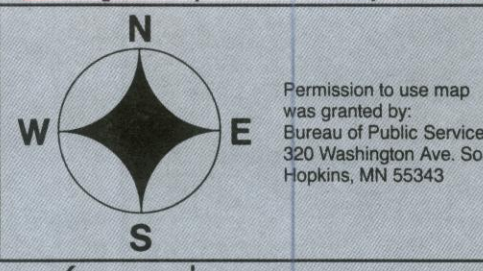
Name _____ City _____ St _____ Zip _____
 Address _____ PO Box 444 Mail To: Northwest Trails
 Telephone _____ Date _____ MRM # /Sponsors Name _____ Osseo, MN 55369

Meetings held 1st Tuesday of each month at 7:30 in the Medina Entertainment Center

<p>DESLAURIERS & SONS INC. BUILDERS & REMODELERS HAMEL, MINNESOTA 55430 DONALD DESLAURIERS</p>	<p>OLSON'S MERCANTILE • Gas • Convenience • Groceries/Dairy • Greeting Cards • Instant Cash Machine • Propane • Water Softener Salt • Gifts • Film Developing • Deli • Magazines</p> <p>4355 Hwy. 55 763-479-1511 Loretto, MN 55357 Judy Strehler, Owner</p>
<p>Ride Responsibly</p> <p>Axel's Tavern 130 W. Railway Street Loretto, Mn. 763-479-1788</p>	<p>Westside Wholesale Tire 19925 75th Ave. No, Corcoran, MN 55340 763-420-2100</p>
<p>CHOO CHOO RESTAURANT & BAR • New Ownership • Comedy, Bands and GREAT FOOD Loretto, MN 763-479-3565</p>	<p>MILLSIDE TAVERN FOOD • LIQUOR Located on the bank of the Crow River ST. MICHAEL 763-497-2905 BEST BURGERS ON THE CROW RIVER</p>
<p>HILLTOP BAR FOOD • LIQUOR 9 AM TO 1 AM HANOVER 763-498-7697</p>	<p>TOM THUMB Groceries • Gas • Deli Monday - Friday 5:00 - 11:00 Saturday & Sunday 6:00 - 11:00 Holidays 6:00 - 11:00 Corcoran 116 & Co. Rd. 10 763-420-2888</p>
<p>DAYTONA MARKET Videos • Live Bait • License & Tackle Cash Machine • Premium Fuel • Groceries • Lottery Injector & 2 Cycle Oil • Restrooms All Major Credit Cards 19000 Cnty Rd 81 • Dayton 763-428-2221</p>	<p>MEDINA ENTERTAINMENT CENTER Rascals Restaurant, Patio & Bar Bowling • Darts • Cosmic Game Room Dancing Mon., Tues, Fri. & Sat. Banquets 10-1600 Guests 763-478-6661 • 501 Hwy 55 • Medina, MN www.medinaentertainment.com</p>
<p>DAVE'S CONOCO Dave Sabourin 4130 Co. Rd. 101 N Plymouth, MN 55446</p>	<p>Sundance GOLF & BOWL 763-420-4700 763-420-4800</p>
<p>DITTER, INC. COOLING - HEATING 763-478-9558</p>	<p>Mama G's Lighted & Fenced Snowmobile Parking COUNTY RD 30 & HIGHWAY 101 MAPLE GROVE, MN 55311 (763) 420-2588 Snowmobilers Welcome!</p>
<p>NEUMANN'S ENTERPRISE Backhoe, Excavator, Welding & Snow Removal 20100 Larkin Road Corcoran, MN 55340 763-420-2547</p>	<p>Scheer Madness Motorsports Inc. Performance Center 23400 Industrial Blvd Rogers, MN 55374</p>
<p>AK AUTO PARTS When the name is NAPA, the standard is quality Premium (Clear) Gas • Diesel • Plugs • Oil Self Service • Fuel Available CORCORAN, MN 763-420-2321 Mon-Fri 7 AM - 6 PM, Sat 8 AM - 5 PM</p>	<p>Corcoran Locker Catering Specializing in Pig Roasts & Outdoor Barbecues 100 to 1000 People 763-420-2555</p>
<p>INN KAHOOT'S Snowmobilers Welcome • Fenced Snowmobile Parking • ON - OFF SALE • OPEN 7 DAYS A WEEK • LIGHTED PARKING • 5 TELEVISIONS • ENTERTAINMENT ON WEEKENDS HELMET HEAD DRINK SPECIALS 45 Hamel Road, Hamel, MN 763-478-6070</p>	<p>Big Woods Saloon LIQUOR ON & OFF SHORT ORDERS FOOD Where Friends Meet LORETTO 763-479-3413</p>
<p>PRINCETON'S LIQUORS 12790 Ban Lake Road (494 & Ban Lake Rd.) Maple Grove, MN 55369 763-559-3257</p>	<p>10-50 CLUB CORCORAN - A Fun Place To Warm Up Good Spirits • Good Food • Good Times Liquor On-Off Sale Food Served Daily After 11:00 AM 763-420-3606</p>
<p>PRECISION LINE Motorsports Snowmobile parts, accessories, clothing, and consignment sales Open 7 days a week, 2 Miles South of 94 on Hwy. 101 763-428-5909</p>	<p>RIDE RESPONSIBLY Please Support Our Advertisers They Support the Trails You're Riding On</p>
<p>PREMIER UPHOLSTERY, INC. "QUALITY AUTOMOTIVE INTERIORS SINCE 1981" • SEAT REPAIRS • SEAT FRAME REPAIRS • HEADLINERS • CONVERTIBLE TOPS • CLASSIC INTERIOR RESTORATIONS • CUSTOM INTERIORS</p>	<p>Nature's Hideaway Lighted and fenced snowmobile parking SPORTS BAR & GRILL - CATERING • Big Screen TV • Happy Hour 3 p.m. - 6 p.m. Sun. thru Sat. • Happy Hour 10 p.m. - 12 a.m. Saturdays • Karaoke - Wed. and Sat. Evenings 21431 141st Ave. No. • P.O. Box 93 Rogers, MN 55374-0093 (763) 428-3013 fax (763) 428-3015</p>



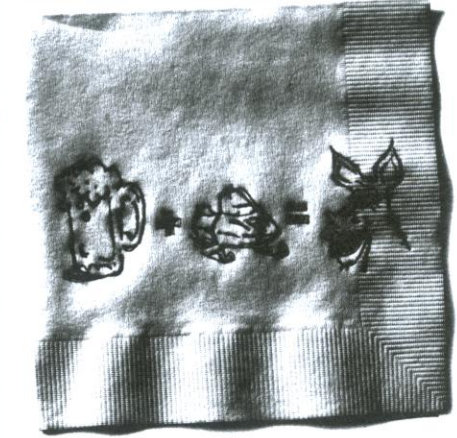
— EXISTING TRAILS
 - - - PROPOSED TRAILS
 ◆ PARKING



DISCLAIMER:
 Due to circumstances beyond our control, Northwest Trails reserves the right to change or re-route the trails indicated on this map without notice.

PERMISSION HAS BEEN GRANTED TO RIDE ONLY ON MARKED TRAILS.
 These trails cross private property. Abuse of this privilege will result in closing of trails.

MISSION
 Northwest Trails is an organization of enthusiastic and committed snowmobilers. Their mission is to support a safe, adventurous and friendly snowmobiling experience primarily through trail coordination, safety education, and club activities of value to members.



Stay in Control. POLARIS

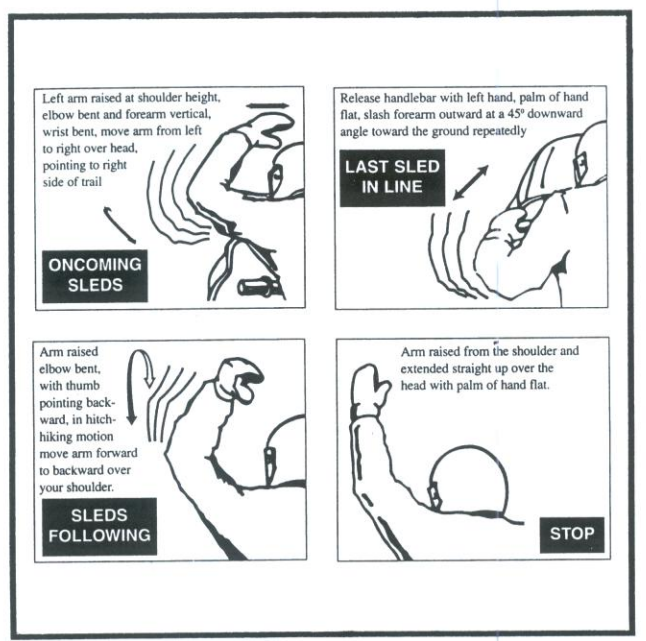
Welcome To The Snowmobile Trails Of Northwest Hennepin County



2000-2001

SNOWMOBILE OPERATING HOURS & EQUIPMENT RESTRICTIONS FOR THE FOLLOWING CITIES*		
CITY	OPERATING HOURS	EQUIPMENT RESTRICTIONS
Brooklyn Park	No Snowmobiling	No Snowmobiling
Champlin	No Snowmobiling	No Snowmobiling
Cocoran	7 AM to 12 AM Monday - Sunday	Standard Equipment
Dayton	7 AM to 11 PM Monday - Thursday 7 AM to 1 AM Friday - Sunday	Standard Equipment
Hassan	7 AM to Midnight except when returning from or departing to a county right of way or designated trail. Speed limit 30 mph within the township right of way.	Standard Equipment
Maple Grove	7 AM to 11 PM Sunday - Thursday 7 AM to 1 AM Friday & Saturday	Standard Equipment
Medina	No Restrictions	Standard Equipment
Osseo	7 AM to 11 PM Monday - Sunday	Standard Equipment
Plymouth	7 AM to 10 PM All Days. No riding on streets.	Standard Equipment

STANDARD EQUIPMENT: Headlight, tail light, reflectorized material at least 16 square inches, muffler, "deadman" throttle.
 *Subject to change.



"SNOWMOBILING IS FUN FOR EVERYONE"

The advertisers on this map have contributed generously to help defray this cost. They are worthy of your patronage.

Minnesota Law 85.018. Subd. 5. Snowmobile Trail Use:

From December 1 to April 1 in any year no use of a motorized vehicle other than a snowmobile, unless authorized by permit, lease or easement shall be permitted on a trail designated for use by snowmobiles.

This is a Grants-in-Aid Trail System funded by the Department of Natural Resources (D.N.R.). The D.N.R. does not endorse any advertisers on this map. No reproduction in whole or part with out written permission from Northwest Trails Association.

THANK YOU FROM THE NORTHWEST TRAILS ASSOCIATION

NORTHWEST TRAILS ASSOCIATION WELCOMES YOU TO RIDE OUR TRAIL

For your safety and enjoyment please observe the following:

- Do not wander off the trails. You have permission to ride the marked trails only.
- Do not damage any trees, shrubs, etc.
- Do not disturb wildlife or any livestock.
- Deposit all trash in barrels provided.
- Be careful when crossing roadways and cross only at 90 degrees.
- Remember that lakes are never completely safe due to river channels and springs eroding the ice away from the underside.
- Carry a compass when out in the woods or at night.
- Remember all snowmobilers are judged by the actions of a few. Please do not cause any disturbances or damage any property.
- Where trails follow public roads, obey all traffic laws and regulations, such as keep to the right, dim lights, etc.
- Snowmobiles are prohibited from operating on certain public streets in many towns. When in these areas watch for marked streets or check with city officials.

ARCTIC CAT
 WORLD CLASS SNOWMOBILES

- * Open 7 Days a Week
- * New and Used Snowmobiles
- * Catmaster Service
- * Complete line of Clothing, Parts and Accessories

North Country OSSEO MN

"Performance for the dedicated sports person"

(763) 425-4867
 West of Hwy 169 on Cnty Rd 81
 Osseo, Minnesota

THINK SNOW

Stay on the Trails or we will lose them.

HITEN SPORTS
 HUGE SELECTION OF NEW & USED SNOWMOBILE PARTS & ACCESSORIES
 ALWAYS LOW PRICES
 WE SHIP UPS
 WE BUY SALVAGE SLEDS
 763-427-3410
 2110 HIGHWAY 169
 1/2 MILE WEST OF ANOKA ON HWY 10

ski-doo
 BOMBARDIER ENGINEERED FOR THE WAY YOU RIDE

2001

HAPPY TRAILS!

OSSEO SPORTS

DOWNTOWN OSSEO
 (763) 425-4159

Since 1955

SALES • PARTS • SERVICE
 CLOTHING • FINANCING

EXCEL
 MARINE & MOTOR SPORTS

THE ULTIMATE SLED FOR POWER & HANDLING

YAMAHA

- Y FULL SERVICE DEALER
- Y YAMAHA SLED, BIKE & ATV
- Y HONDA BIKE & ATV
- Y HUGE ACCESSORY DEPT
- Y ORDER ON-LINE 24 X 7 AT:

WWW.EXCELMMS.COM
 ** 24HR SHIPMENT **

CONVENIENT HOURS
 M - F 9:00 - 8:00
 SAT 9:00 - 5:00
 SUN 12:00 - 4:00

EXCEL MARINE & MOTOR SPORTS
 3050 COON RAPIDS BLVD
 COON RAPIDS, MN 55433
 763-421-8701

Ride Responsibly

SNOWMOBILE TOURISM...

ISMA

...WORKS FOR AMERICA!

SONNY'S
 AUTO REPAIR & WELDING
 NO JOB TOO BIG OR SMALL
 HAMEL, MN
 763-478-6499

When there's a tough job to be done...

THE TUCKER SNO-CAT
 (952) 888-7372

Put the Cat out!

(The Tucker SNO-CAT...
 The world's leading, 4-track snow vehicle!)

TRACK, INC., P.O. Box 20541
 Bloomington, MN 55420 (952) 888-7372
 Your Exclusive Midwest Tucker Distributor

Fauler
 SNO-PARTS DISTRIBUTORS
 9054 Grand Avenue South
 Bloomington, MN 55420
 952-884-5401 • Nat. 800-843-1324

Dealers :
 Call for New 2001 Catalog

ROOSTIN
 COMET
 GASKET INC.

WINDEROSA
 ACCESSORIES

WISECO
HOLESHOT

"Parts for New and Old Since 1968"

R & W WELDING & MACHINE, INC.

HELI-ARC WELDING
763-425-5221
 417 County Road 81 Service Road
 Osseo, MN 55369
 FAX: 763-425-9857

Mike Rooney Gary Current

(763) 478-9431 (763) 478-6177

BERTHIAUME COMMERCIAL LAWN & SNOW
 Complete Lawn Maintenance
 Snow Removal • Underground Sprinklers

Joe Berthiaume President 5065 Hwy 101 N Hamel, MN 55340

Lawn King, Inc.

Complete Landscape Services
 DAVID REMER
763-420-2909
 7555 County Road 116 • Corcoran, MN 55340

ANCHOR PAPER

AN EMPLOYEE OWNED COMPANY. AN EQUAL OPPORTUNITY EMPLOYER.

WHOLESALE DISTRIBUTOR FOR FINE PRINTING PAPERS, COPIER PAPERS, RECYCLED PAPERS AND PACKAGING MATERIALS, PACKAGING EQUIPMENT AND SUPPLIES, JANITORIAL SUPPLIES.

(651) 298-1311 OFFICE • (651) 298-1312 CITY DESK
 (800) 652-9755 TOLL FREE
 480 Broadway, St. Paul, MN 55101

SNOWMOBILE TOURISM...

ISMA

...WORKS FOR AMERICA!

True Value

HAMEL BUILDING CENTER

18710 Highway 55
 Plymouth - Hamel
 For All Your Building Needs
763-478-6601

POLARIS RIDE THE BEST

SNOWMOBILES • ATVS • PWC'S
 VICTORY MOTORCYCLES • RANGER'S

Your Complete Polaris Dealer!!

Serving the Twin Cities since 1963
 7 Polaris Master Technicians
 '97 - '98 Outstanding Dealer of the Year
 Courteous Sales & Service Dept.
 Newly Remodeled Showroom
 In-House Financing

ETZEL EXCAVATING

ROAD WORK • GRADING • EXCAVATING
 6403 Valley View Road, Hamel, MN 55340
763-478-6974

YAMAHA
 952-933-9649

HOPKINS HITCHING POST
 10% Parts Discount to all Club Members
 350 17th Ave N, Hopkins, MN 55343
 952-933-9649

Ride Responsibly

MEDINA ENTERTAINMENT CENTER

Rascals Restaurant, Patio & Bar
 Meetings, Seminars & Trade Shows for 10-1600

We Specialize in Weddings & Banquets

Ballroom
 Dancing Every Mon., Tues., Wed., Fri. & Sat. Nights
 National & Local Talent

Bowling & Game Room
 763-478-6661
 4 Miles West of 494 on Hwy 55
 500 Hwy 55 • Medina, MN
 www.medinaentertainment.com
 The Medina Inn • 763-478-9770

McKEE & ANDREWS INSURANCE AGENCY INC.

HOME AUTO BUSINESS LIFE
 SNOWMOBILE BOAT

1421 E. WAYZATA BLVD.
 WAYZATA, MN 55391
MIKE McKEE 952-476-0933

HAMEL SNO-RUNNERS

— Snowmobilers Invited —
 Meetings 1st Monday of each month.
 Hamel American Legion
 Trail rides on marked trails. Club Trips

P.O. Box 190
 Hamel, MN 55340

HEINEN & MASON

33 CENTRAL AVENUE
 OSSEO, MINNESOTA 55369
763-425-2178

LORETTO SNO-BIRDS

Loretto
 P.O. Box 272
 Loretto, MN 55357

Please Support Our Advertisers

ROASTING CORCORAN LOCKER PLANT

Retail Meats & Sausages
 Homesmoked Hams & Bacon
 Beef Sides & Quarters

763-420-2555

20121 County Road #10 Corcoran, MN 55340
 JOE ANDRES
 BEN ANDRES

MODEL LANDSCAPING

"WHERE QUALITY COMES FIRST"
 KEN REMER
763-428-4140
 23415 Wood Lane Rogers, MN 55374

TRI-K Sports Inc.

Polaris Sales & Service
763-479-3719
 Maple Plain, MN

WALDOCH SPORTS

651-464-5776

PARTS • SALES • SERVICE • FINANCE • ACCESSORIES

YAMAHA
 www.waldochsports.com

Stay on the Trails or we will lose them.

"Superbowl Sunday?
 Great.
 Tell me who wins."

Why view life from the cheap seats?
 This is your time to play.
 On the 600 XC SP with its
 EDGE chassis and suspension,
 you're the epitome of power.
 And as for the game? What game?

1-800-POLARIS www.polarisindustries.com

POLARIS
 The Way Out.