

Northwest Trails Association Membership Form Dues: \$25.00 per year

Name _____ City _____ St _____ Zip _____
 Address _____ Telephone _____ Date _____ MRM #/Sponsors Name _____
 Mail To: Northwest Trails
 PO Box 444
 Osseo, MN 55369

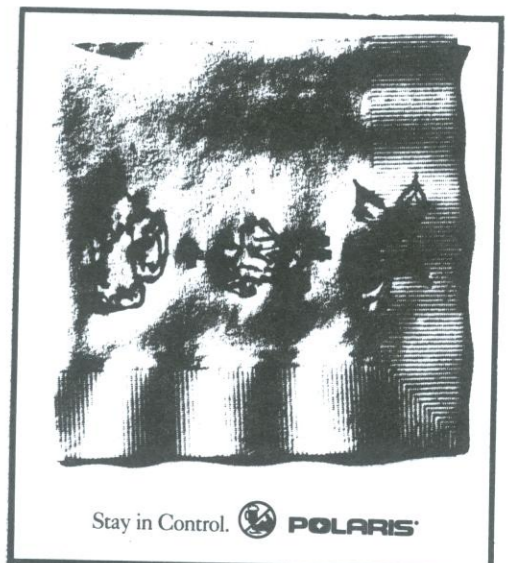
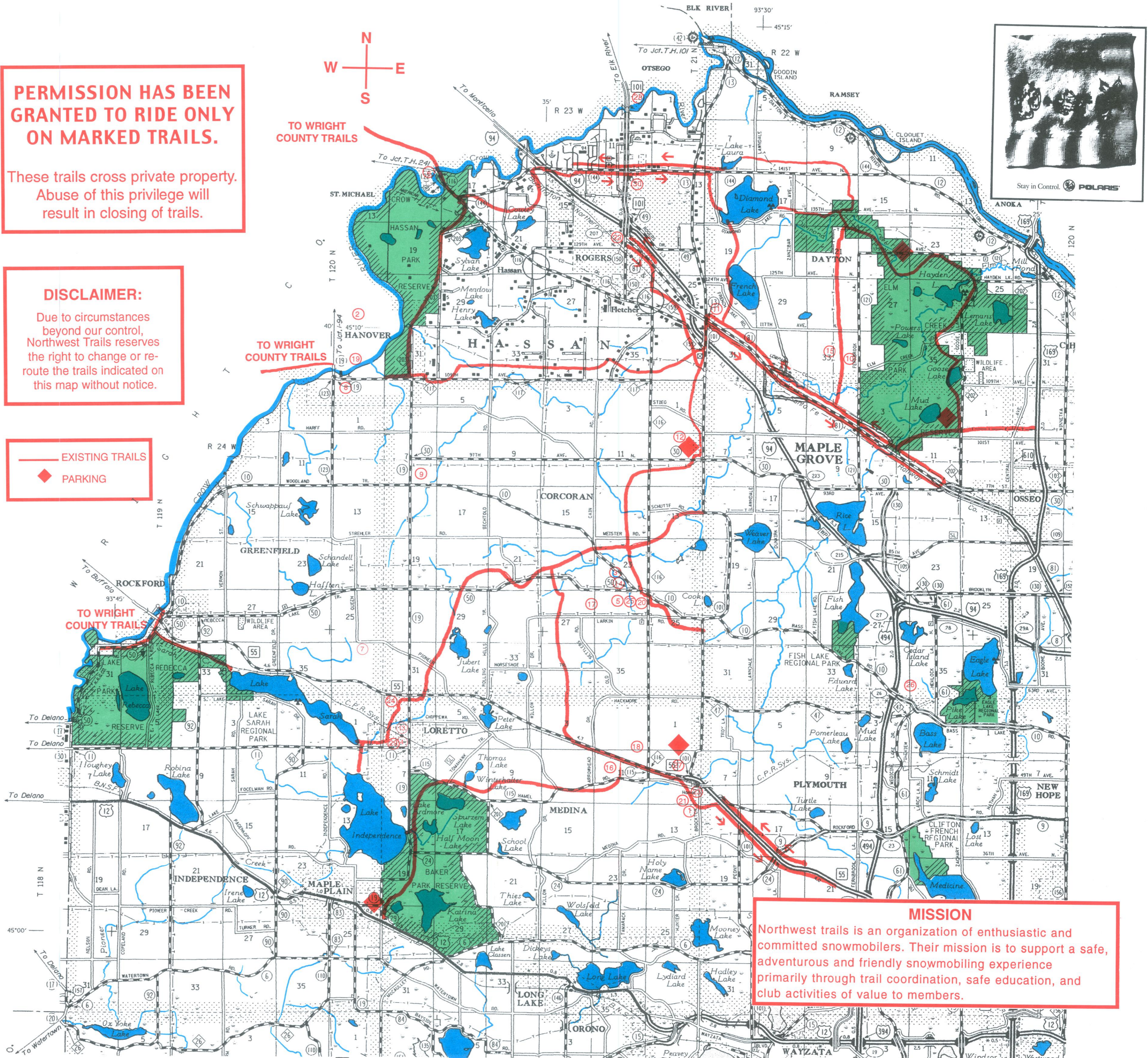
Meetings held 1st Tuesday of each month at 7:30 in the Medina Entertainment Center

<p>DESLAURIERS & SONS INC. BUILDERS & REMODELERS HAMEL, MINNESOTA 55430 DONALD DESLAURIERS</p>	<p>A-1 TRANSFER INC. RICK KLATKE 5190 Pioneer Trail Loretto, MN 55357 763-498-6729 Fax: 763-498-7888 Cell: 612-327-7143 SPECIALIZED TRUCKING</p>
<p>Corcoran Locker Catering Specializing in Pig Roasts & Outdoor Barbecues 1900 County Road #10 Corcoran, MN 55340 763-420-0995</p>	<p>Axel's Tavern 130 W. Highway Street Loretto, MN 763-479-1788</p>
<p>Westside Tire HANKOOK MILEAGE PLUS GT Complete tire service Brake and alignment service Rotations Accessories Road service 19925 7th Ave. North-Corcoran (763)420-2100</p>	<p>MILLSIDE TAVERN FOOD • LIQUOR Located on the bank of the Crow River ST. MICHAEL 763-497-2905 BEST BURGERS ON THE CROW RIVER</p>
<p>HILLTOP BAR FOOD • LIQUOR 9 AM to 1 AM HANOVER 763-498-7697</p>	<p>HONDA ELECTRIC ELECTRICAL CONTRACTORS 5075 Nielsen Circle, P.O. Box 236 Loretto, MN 55357 (763) 498-8433</p>
<p>DAYTONA MARKET Videos • Live Bait • License & Tackle Cash Machine • Premium Fuel • Groceries • Lottery Injector & 2 Cycle Oil • Restaurants All Major Credit Cards 19000 Cnty Rd 81 • Dayton 763-428-2221</p>	<p>DEHN'S LUNCH • DINNER • BANQUETS • TAKE OUT Lunch Mon-Fri 11-2 Dinner Mon-Sat 5-9:30 Sun 4-9 11281 Fernbrook Ln Maple Grove, MN 55369 (763) 420-6460</p>
<p>10-50 CLUB Liquor On-Off Sale Food Served Daily Mon-Sat 11am-2pm Friday Only Dinner 5pm-9pm Sat-Sunday Breakfast 7:30 Till Noon Corcoran 763-420-3606</p>	<p>SUNDANCE Golf & Bowl 763.420.4700 763.420.4800 • Sports Bar & Restaurant • Daily Food & Drink Specials • Karaoke Friday & Saturday Nights • Banquet Rooms & Catering • Lighted & Visible Snowmobile Parking Area</p>
<p>DITTER INC. SINCE 1946 COOLING - HEATING 763-478-9558</p>	<p>Make The Detour For Great Food & Drinks Daily Happy Hour Live Music Fri. & Sat. ph 763-474-2821</p>
<p>NEUMANN'S ENTERPRISE Backhoe, Bobcat, Welding & Snow Removal 20100 Larkin Road Corcoran, MN 55340 763-420-2547</p>	<p>RED ROOSTER AUTO SERVICE FOR YOUR BEST VALUE IN AUTO PARTS Rogers 763-428-4228 • Bloomington 952-888-4321 Crystal 763-533-4321 • Apple Valley 952-432-3400 Lexington 763-784-1088 • www.red-rooster.com</p>
<p>AK AUTO PARTS When the name is NAPA, the standard is quality Premium Clean Gas • Diesel • Plugs • Oil Self Service • Fuel Available CORCORAN, MN 763-420-2321 Mon-Fri 7 AM - 6 PM, Sat 8 AM - 5 PM</p>	<p>Big Woods Saloon LIQUOR ON & OFF SHORT ORDERS FOOD Where Friends Meet LORETTO 763-479-3413</p>
<p>INN KAHOOT'S Snowmobilers Welcome • Fenced Snowmobile Parking • ON - OFF SALE • OPEN 7 DAYS A WEEK • LIGHTED PARKING • 5 TELEVISIONS • ENTERTAINMENT ON WEEKENDS HELMET HEAD DRINK SPECIALS 45 Hamel Road, Hamel, MN 763-478-6070</p>	<p>Stanchion In The Heart of Uptown Corcoran WELCOME SNOWMOBILERS TO CORCORAN, U.S.A. On and Off Liquor and Beer Stop in and say "where in the hell am I?" Pizza & Sandwiches 763-420-2582</p>
<p>PRINCETON'S LIQUORS 12790 Bass Lake Road (9th & Bass Lake Rd.) Maple Grove, MN 55369 763-559-3257 Joel & Sue Princeton Owners</p>	<p>Starchion In The Heart of Uptown Corcoran WELCOME SNOWMOBILERS TO CORCORAN, U.S.A. On and Off Liquor and Beer Stop in and say "where in the hell am I?" Pizza & Sandwiches 763-420-2582</p>
<p>MEDINA ENTERTAINMENT CENTER Rascals Restaurant, Patio & Bar Bowling • Darts • Cosmic Game Room Dancing Mon., Tues., Wed., Fri. & Sat. Banquets & Weddings 10-1600 Guests 763-476-6861 • 500 Hwy 55 • Medina, MN www.medinaentertainment.com</p>	<p>Starchion In The Heart of Uptown Corcoran WELCOME SNOWMOBILERS TO CORCORAN, U.S.A. On and Off Liquor and Beer Stop in and say "where in the hell am I?" Pizza & Sandwiches 763-420-2582</p>
<p>P.L.M. Precision Line Motorsports Snowmobile parts, clothing, accessories and consignment sales of most brands. 2 miles north of Rogers on 101 www.precisionlinemotorsports.com 763-428-5909</p>	<p>Starchion In The Heart of Uptown Corcoran WELCOME SNOWMOBILERS TO CORCORAN, U.S.A. On and Off Liquor and Beer Stop in and say "where in the hell am I?" Pizza & Sandwiches 763-420-2582</p>
<p>SNOWMOBILE TOURISM... WORKS FOR AMERICA!</p>	<p>Starchion In The Heart of Uptown Corcoran WELCOME SNOWMOBILERS TO CORCORAN, U.S.A. On and Off Liquor and Beer Stop in and say "where in the hell am I?" Pizza & Sandwiches 763-420-2582</p>
<p>Nature's Hideaway SNOWMOBILERS WELCOME Lighted and fenced snowmobiling parking Kitchen Hours: Monday - Thursday 11:00 am - 10:00 pm, Friday & Saturday 11:00 am - 11:00 pm, Sunday 11:30 am - 10:00 pm (763) 479-3565</p>	<p>Starchion In The Heart of Uptown Corcoran WELCOME SNOWMOBILERS TO CORCORAN, U.S.A. On and Off Liquor and Beer Stop in and say "where in the hell am I?" Pizza & Sandwiches 763-420-2582</p>
<p>SPORTS BAR & GRILL - CATERING • Big Screen TV • Happy Hour 3 p.m. - 6 p.m. Sun. thru Sat. • Happy Hour 10 p.m. - 12 a.m. Saturdays • Karaoke - Wed. and Sat. Evenings 21491 141st Ave. N. • R.D. Box 93 Rogers, MN 55374-0093 fax (763) 428-3015</p>	<p>Starchion In The Heart of Uptown Corcoran WELCOME SNOWMOBILERS TO CORCORAN, U.S.A. On and Off Liquor and Beer Stop in and say "where in the hell am I?" Pizza & Sandwiches 763-420-2582</p>

PERMISSION HAS BEEN GRANTED TO RIDE ONLY ON MARKED TRAILS.
 These trails cross private property. Abuse of this privilege will result in closing of trails.

DISCLAIMER:
 Due to circumstances beyond our control, Northwest Trails reserves the right to change or re-route the trails indicated on this map without notice.

EXISTING TRAILS
 PARKING



MISSION
 Northwest trails is an organization of enthusiastic and committed snowmobilers. Their mission is to support a safe, adventurous and friendly snowmobiling experience primarily through trail coordination, safe education, and club activities of value to members.

DISCLAIMER: Due to circumstances beyond our control, Northwest Trails reserves the right to change or re-route the trails indicated on this map without notice.
 Voicemail: 952-882-6770 • Email: nwtrails@nwtrails.net or http://www.nwtrails.net

Welcome To The Snowmobile Trails Of Northwest Hennepin County



2001 - 2002

SNOWMOBILE OPERATING HOURS & EQUIPMENT RESTRICTIONS FOR THE FOLLOWING CITIES*		
CITY	OPERATING HOURS	EQUIPMENT RESTRICTIONS
Brooklyn Park	No Snowmobiling	No Snowmobiling
Champlin	No Snowmobiling	No Snowmobiling
Cocoran	7 AM to 12 AM Monday - Sunday	Standard Equipment
Dayton	7 AM to 11 PM Monday - Thursday 7 AM to 1 AM Friday - Sunday	Standard Equipment
Hassan	7 AM to Midnight except when returning from or departing to a county right of way or designated trail. Speed limit 30 mph within the township right of way.	Standard Equipment
Maple Grove	7 AM to 11 PM Sunday - Thursday 7 AM to 1 AM Friday & Saturday	Standard Equipment
Medina	No Restrictions	Standard Equipment
Osseo	7 AM to 11 PM Monday - Sunday	Standard Equipment
Plymouth	7 AM to 10 PM All Days. No riding on streets.	Standard Equipment

STANDARD EQUIPMENT: Headlight, tail light, reflectorized material at least 16 square inches, muffler, "deadman" throttle.
 *Subject to change.

INTERNATIONAL SNOWMOBILE HAND SIGNALS

<p>RIGHT TURN Let arm extend at shoulder height, above wrist and forearm vertical with palm of hand flat.</p>	<p>STOP In some jurisdictions, the STOP signal may be indicated using the right arm above the left hand in a "V" shape. Snowmobilers should watch for and be prepared to stop for other signal.</p>	<p>LEFT TURN Let arm extend at shoulder height, above wrist and forearm vertical with palm of hand flat.</p>
<p>LAST SLED IN LINE Let arm extend at shoulder height, above wrist and forearm vertical with hand clapped in a fist.</p>	<p>SLOWING Let arm extend at shoulder height, above wrist and forearm vertical with hand clapped in a fist.</p>	<p>ONCOMING SLEDS Let arm extend at shoulder height, above wrist and forearm vertical with hand clapped in a fist.</p>
<p>SLEDS FOLLOWING Let arm extend at shoulder height, above wrist and forearm vertical with hand clapped in a fist.</p>		

"SNOWMOBILING IS FUN FOR EVERYONE"

The advertisers on this map have contributed generously to help defray this cost. They are worthy of your patronage.
Minnesota Law 85.018, Subd. 5. Snowmobile Trail Use:
 From December 1 to April 1 in any year no use of a motorized vehicle other than a snowmobile, unless authorized by permit, lease or easement shall be permitted on a trail designated for use by snowmobiles.
 This is a Grants-in-Aid Trail System funded by the Department of Natural Resources (D.N.R.). The D.N.R. does not endorse any advertisers on this map. No reproduction in whole or part with out written permission from Northwest Trails Association.

THANK YOU FROM THE NORTHWEST TRAILS ASSOCIATION

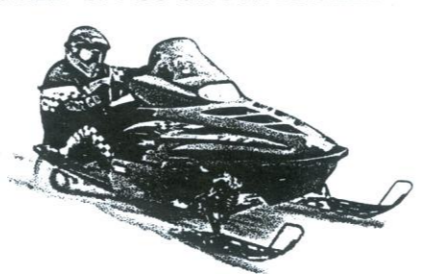
NORTHWEST TRAILS ASSOCIATION WELCOMES YOU TO RIDE OUR TRAIL

- For your safety and enjoyment please observe the following:
- Do not wander off the trails. You have permission to ride the marked trails only.
 - Do not damage any trees, shrubs, etc.
 - Do not disturb wildlife or any livestock.
 - Deposit all trash in barrels provided.
 - Be careful when crossing roadways and cross only at 90 degrees.
 - Remember that lakes are never completely safe due to river channels and springs eroding the ice away from the underside.
 - Carry a compass when out in the woods or at night.
 - Remember all snowmobilers are judged by the actions of a few. Please do not cause any disturbances or damage any property.
 - Where trails follow public roads, obey all traffic laws and regulations, such as keep to the right, dim lights, etc.
 - Snowmobiles are prohibited from operating on certain public streets in many towns. When in these areas watch for marked streets or check with city officials.



ARCTIC CAT

WORLD CLASS SNOWMOBILES



- * Open 7 Days a Week
- * New and Used Snowmobiles
- * Catmaster Service
- * Complete line of Clothing, Parts and Accessories

North Country OSSEO MN

"Performance for the dedicated sports person"
 (763) 425-4867
 West of Hwy 169 on Cnty Rd 81
 Osseo, Minnesota

THINK SNOW

CHITENI SPORTS
 HUGE SELECTION OF NEW & USED SNOWMOBILE PARTS & ACCESSORIES
ALWAYS LOW PRICES
 WE SHIP UPS
 WE BUY SALVAGE SLEDS
 763-427-3410
 8110 HWY 16 NW ANOKA
 6 MILES WEST OF ANOKA ON HWY 16

Stay on the Trails or we will lose them.

BOMBARDIER RECREATIONAL PRODUCTS



HAPPY TRAILS!

OSSEO SPORTS

DOWNTOWN OSSEO
 (763) 425-4159
 Since 1955
 SALES • PARTS • SERVICE
 CLOTHING • FINANCING

EXCEL

THE ULTIMATE SLED FOR POWER & HANDLING

- > FULL SERVICE DEALER
- > YAMAHA SLED, BIKE & ATV
- > HONDA BIKE & ATV
- > HUGE ACCESSORY DEPT
- > ORDER ON-LINE 24 X 7 AT:

WWW.EXCELMMS.COM
 ** 24HR SHIPMENT **

CONVENIENT HOURS
 M - F 9:00 - 8:00
 SAT 9:00 - 5:00

EXCEL MOTOR SPORTS
 3050 COON RAPIDS BLVD
 COON RAPIDS, MN 55433
 763-421-8701



CORCORAN LOCKER PLANT

Retail Meats & Sausages
 Homesmoked Hams & Bacon
 Beef Sides & Quarters
 763-420-2555
 20121 County Road #10 Corcoran, MN 55340
 JOE ANDRES

SNOWMOBILE TOURISM...
 ISMA
 ...WORKS FOR AMERICA!

When there's a tough job to be done...



Put the Cat out!

(The Tucker SNO-CAT... The world's leading, 4-track snow vehicle!)

TRACK, INC., P.O. Box 20541
 Bloomington, MN 55420 (952) 888-7372
 Your Exclusive Midwest Tucker Distributor

SONNY'S
 AUTO REPAIR & WELDING
 NO JOB TOO BIG OR SMALL
 HAMEL, MN
 763-478-6499

SNOWMOBILE TOURISM...
 WORKS HERE!

THE TUCKER SNO-CAT
 (952) 888-7372



Fowler
 SNO-PARTS DISTRIBUTORS
 9054 Grand Avenue South
 Bloomington, MN 55420
 952-884-5401 • Nat. 800-843-1324
 Dealers Call for 2002 Catalog

Now Carrying NTN and Bottom Line
 WISECO, COUNTRY, POWERMATE, NGK, CAMAROST, FAST-TRAC, NTN, COMETIC, BOTTOM LINE, SPORTTEC, WINDEROSA, Roretin, HOLESHOT.

R & W WELDING & MACHINE, INC.

HELI-ARC WELDING
 763-425-5221
 417 County Road 81 Service Road
 Osseo, MN 55369
 FAX: 763-425-9857
 Mike Rooney Gary Current

PPLM Precision Line Motorsports

Snowmobile parts, clothing, accessories and consignment sales of most brands.
 2 miles north of Rogers on 101
 www.precisionlinemotorsports.com
 763-428-5909

ANCHOR PAPER

AN EMPLOYEE OWNED COMPANY. AN EQUAL OPPORTUNITY EMPLOYER.
 WHOLESALE DISTRIBUTOR FOR FINE PRINTING PAPERS, COPIER PAPERS, RECYCLED PAPERS AND PACKAGING MATERIALS, PACKAGING EQUIPMENT AND SUPPLIES, JANITORIAL SUPPLIES.
 (651) 298-1311 OFFICE • (651) 298-1312 CITY DESK
 (800) 652-9755 TOLL FREE
 480 Broadway, St. Paul, MN 55101

SNOWMOBILE TOURISM...
 ISMA
 ...WORKS FOR AMERICA!

True Value. HAMEL BUILDING CENTER

18710 Highway 55
 Plymouth - Hamel
 For All Your Building Needs
 763-478-6601

Lawn King, Inc.

Complete Landscape Services
 DAVID REMER
 763-420-2909
 7555 County Road 116 • Corcoran, MN 55340

POLARIS

SNOWMOBILES • ATVS • PWC'S
 VICTORY MOTORCYCLES • RANGER'S
 Your Complete Polaris Dealer!!
 Serving the Twin Cities since 1963
 7 Polaris Master Technicians
 '97 - '98 Outstanding Dealer of the Year
 Courteous Sales & Service Dept.
 Newly Remodeled Showroom
 In-House Financing



ROAD WORK • GRADING • EXCAVATING
 6403 Valley View Road, Hamel, MN 55340
 763-478-6974

ETZEL EXCAVATING

ROAD WORK • GRADING • EXCAVATING
 6403 Valley View Road, Hamel, MN 55340
 763-478-6974

YAMAHA

952-933-9649
 HOPKINS HITCHING POST
 10% Parts Discount to all Club Members
 350 17th Ave N, Hopkins, MN 55343
 952-933-9649

Ride Responsibly

MEDINA ENTERTAINMENT CENTER
 • Rascals Restaurant, Patio & Bar
 • Dancing Every Mon., Tues., Wed., Fri. & Sat.
 • Cosmic Bowling
 • Game Room
 • Darts
 • Pull Tabs
 • Banquets
 • Meetings
 • Wedding Receptions
 Call 763-478-6661
 For Tickets & Information
 500 Hwy 55 • Medina, MN
 www.medinaentertainment.com
 THE MEDINA INN
 763-478-9770

McKEE & ANDREWS INSURANCE AGENCY INC.

HOME AUTO BUSINESS LIFE
 SNOWMOBILE BOAT
 1421 E. WAYZATA BLVD.
 WAYZATA, MN 55391
MIKE McKEE 952-476-0933

PULASKI'S PALACE

Maple Grove
 Co. Rd. 30 & Co. Rd. 81
 763-425-8175
 ENTERTAINMENT • FOOD • LIQUOR
OPEN 7 DAYS A WEEK!!!!

HAMEL SNO-RUNNERS

— Snowmobilers Invited —
 Meetings 1st Monday of each month.
 Hamel American Legion
 Trail rides on marked trails. Club Trips
 P.O. Box 190
 Hamel, MN 55340
 E-mail address
 HOGGGMAN@ditterinc.com

TRI-K Sports Inc.

Polaris Sales & Service
 763-479-3719
 Maple Plain, MN

HEINEN & MASON

33 CENTRAL AVENUE
 OSSEO, MINNESOTA 55369
 763-425-2178

LORETTO SNO-BIRDS

Loretto
 P.O. Box 272
 Loretto, MN 55357

Please Support Our Advertisers

Ride Responsibly

MODEL LANDSCAPING

"WHERE QUALITY COMES FIRST"
 KEN REMER
 763-428-4140
 23415 Wood Lane Rogers, MN 55374

SNOWMOBILE TOURISM...
 ISMA
 ...WORKS FOR AMERICA!

WALDOCH SPORTS

651-464-5776
 PARTS • SALES • SERVICE • FINANCE • ACCESSORIES
YAMAHA
 www.waldochsports.com

Stay on the Trails or we will lose them.

Grip the handlebars Tight
 Let go of Everything else.

Adrenaline is king on the 500, 600, 700 & 800 XCSPs.
 They're not for riders who accept second place.

In other words:
 Goodbye worries, Hello freedom.
 1-800-POLARIS www.polarisindustries.com

POLARIS
 The Way Out.

©2002 Polaris Sales Inc. For your safety, Polaris recommends that all snowmobile riders wear a helmet and other appropriate safety apparel.