

NORTHWEST TRAILS

NORTHWEST HENNEPIN COUNTY



Casual & Affordable Family Dining



New patio with heated smoking area.
Now serving breakfast 9 a.m.-11:30 a.m. Sat. & Sun

- Try Our Famous Ribs & Wings
- Daily Lunch and Dinner Specials
- Happy Hour Monday-Friday
- Full Take-Out Menu Available
- Full Wine & Liquor Menu
- Caboose Available for Private Parties
- Catering - On or Off Premise
- Pull Tabs & ATM

Kitchen Hours:
Monday-Thursday 10:00 am - 10:00 pm
Friday 10:00 am - 10:00 pm
Saturday 9:00 am - 11:00 pm
Sunday 9:00 am - 10:00 pm

763-479-3565
160 West Railway St., Loretto, MN 55357

IT'S NOT ALL ABOUT BEATING YOUR BUDDY.
ACTUALLY, THAT'S EXACTLY WHAT IT'S ALL ABOUT.



RUSH PRO-R

2011 RUSH PRO-R When you're ready to step up and experience the next level of trail performance you're ready to feel the Rush. Feel how the industry's first truly progressive rear suspension absorbs the messiest, nastiest trail junk out there and provides an unmatched ride. All with the ability to humiliate your buddies. Bonus.



\$1.00 Donation
NORTHWEST TRAILS
Northwest Hennepin County



RESPECT & PROTECT OUR TRAILS

2010-2012
Official Snowmobile Trails Guide & Map
Sponsored by Northwest Trails Association
www.nwtrails.net
[facebook.com/nwtrails](https://www.facebook.com/nwtrails)

LEGEND

- Northwest Trails Snowmobile Trail
- Trail Start/End
- Mileage Between Trail Intersections
- Non-Maintained (non-GIA) Trail
- Trail Subject to Rerouting or Closure
- Wright County Snowmobile Trails
- Trail-side Picnic Area
- Shelter
- Parking Area
- Advertiser Location & Ad Number
- Interstate Highway
- US Highway
- State Highway
- County/State-Aid Highway
- County Road

TRAIL SIGNS

- Assures that the user is on trail.
- Indicates changes in trail direction.
- The user must make a right or left turn.
- Trail is curvy.
- Trail is splitting or merging.
- Indicates an area where caution is necessary.
- Indicates there is a stop ahead.
- Indicates trails and areas where snowmobile use is prohibited.
- Indicates a one-way trail where access is possible from another trail.
- Indicates a stop 25 feet away. Stop and look for traffic before proceeding.
- Indicates there is possible traffic ahead.
- Please stay on trail.
- Please stay on trail by MN DNR.

NORTHWEST TRAILS ASSOCIATION WELCOMES YOU TO RIDE OUR TRAILS!

For your safety and enjoyment, please observe the following:

- Do not wander off of the trails. You have permission to ride the marked trails only.
- Do not damage any trees, shrubs, etc.
- Do not disturb wildlife or livestock.
- Do not litter. Dispose of trash properly.
- Be careful when crossing roadways and cross only at 90 degree angles.
- Remember that lakes are never completely safe due to currents, springs and changing temperatures.
- Carry a compass when out in the woods or at night.
- Remember all snowmobilers are judged by the actions of a few. Please do not cause any disturbances or damage any property.
- Where trails follow public roads, obey all traffic laws and regulations such as keeping to the right, dimming your lights and following speed limits.
- Snowmobiles are prohibited or restricted from operating on certain public streets in many cities. When in these areas, watch for marked streets or check with city officials.

Minnesota United Snowmobilers Association
www.mnsnowmobiler.org
7040 Lakeland Ave N, Suite 212
Brooklyn Park, MN 55428
Join Your State Association!

ATTENTION!

These trails are possible only because landowners have given permission to cross their land. Please respect these trails and adjacent property. Always stay on the trails and enter and exit only at designated points or road crossings.

Join a snowmobile club to keep the trails groomed & support snowmobiling as a sport! Thank You & Happy Trails!

Snowmobiling is fun for everyone!

The advertisers on this map have contributed to help defray the costs of this map. They are worthy of your patronage.

Minnesota Law 85.018, subd. 5. Snowmobile Trail Use. From December 1st to April 1st in any year, no use of a motorized vehicle other than a snowmobile, unless authorized by permit, lease or easement, shall be permitted on a trail designated for use by snowmobilers.

The trails on this map are part of the Grant-in-Aid Trail System and are funded by the Department of Natural Resources.

The DNR does not endorse any of the map advertisers.

The future of snowmobiling depends on the impressions created by snowmobilers today. Obey the laws and basic rules of courtesy and stay on the marked trails. Trespassing, littering and excessive noise are subject to State, County and Local ordinances.

NOTICE

This map is to be used as a guide only. Snowmobilers using this map assume the responsibility and risks for their own safety when using the indicated trails.

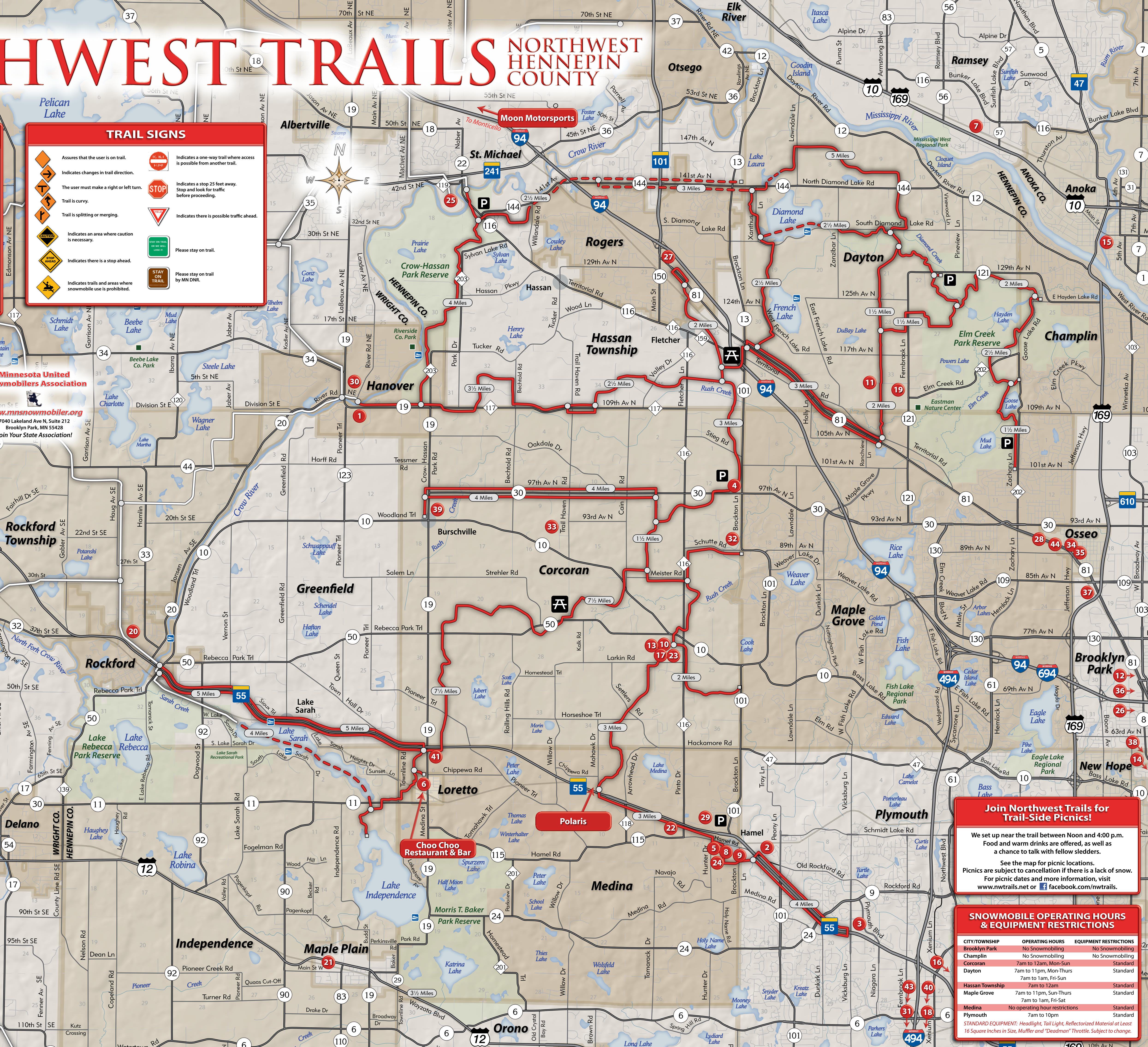
Every effort has been made to make this map as accurate as possible; however, trail locations may change. The cartographers and others who provided information for this map assume no liability whatsoever for any consequences resulting in the use of this map.

Map created by:
MUSTANG MAPPING
320.202.9607
www.mustangmapping.com
County Atlas - Custom Maps
Aerial Photography

Northwest Trails Association

Become a club member! Visit us on our website for a membership application. The club meets on the first Tuesday of every month at 7:30pm at Medina Entertainment Center - join us!

E-mail: nwtrails@nwtrails.net Phone: 952-882-6770
Web: www.nwtrails.net Facebook: [facebook.com/nwtrails](https://www.facebook.com/nwtrails)



Join Northwest Trails for Trail-Side Picnics!

We set up near the trail between Noon and 4:00 p.m. Food and warm drinks are offered, as well as a chance to talk with fellow sledders.

See the map for picnic locations. Picnics are subject to cancellation if there is a lack of snow. For picnic dates and more information, visit www.nwtrails.net or [facebook.com/nwtrails](https://www.facebook.com/nwtrails).

SNOWMOBILE OPERATING HOURS & EQUIPMENT RESTRICTIONS

CITY/TOWNSHIP	OPERATING HOURS	EQUIPMENT RESTRICTIONS
Brooklyn Park	No Snowmobiling	No Snowmobiling
Champlin	No Snowmobiling	No Snowmobiling
Corcoran	7am to 12am, Mon-Sun	Standard
Dayton	7am to 11pm, Mon-Thurs 7am to 1am, Fri-Sun	Standard
Hassan Township	7am to 12am	Standard
Maple Grove	7am to 11pm, Sun-Thurs 7am to 1am, Fri-Sat	Standard
Medina	No operating hour restrictions	Standard
Plymouth	7am to 10pm	Standard

STANDARD EQUIPMENT: Headlight, Tail Light, Reflectorized Material at Least 16 Square Inches in Size, Muffler and "Deadman" Throttle. Subject to change.

1

HILLTOP BAR & GRILL

Great Burgers
Low Drink Prices

Open 9am to 1am

HANOVER, MINNESOTA
(763) 498-7697

2

True Value.

HAMEL BUILDING CENTER

18710 Highway 55
Plymouth - Hamel
For All Your Building Needs
763-478-6601

3

McKee & Andrews Insurance Agency Inc.

MIKE MCKEE

763-231-3340

15600 35th Av N. #202
Plymouth, MN 55447

Home Auto Business
Life Snowmobile Boat

4

BAR AND GRILL

Open 7 Days a Week
Big Screen TV
Pool Tables
Plenty of Mama G's

• Arcade Entertainment
• Great Weekly Specials
• Karaoke Saturday Evenings
• Friendly Atmosphere
• Alighted Snowmobile Parking

3805 N. COUNTY RD 30 & HWY 101
MAPLE GROVE
763-420-2588

5

DES LAURIERS & SONS INC.

BUILDERS & REMODELERS

6

LORETTO

Club Meeting every 3rd Thursday of the month
Sept-April 8:00 p.m.
at
Choo Choo Restaurant & Bar
160 Railway St W, Loretto

7

EAT. SLEEP. RIDE.

PRO Power Sports & Marine
ski-doo
POLARIS The Way Out.

SALES
PARTS
SERVICE

10% MNUCA Discount!

763-576-1706 8701 Hwy. 10 NW
www.prepoweronline.com Anoka, MN 55303

8

INNAHOOTS

Open 7 Days A Week
(763) 478-6070

45 Hamel Rd
Hamel, MN 55340
(located 1 mile west of 94 on Hwy 55)

Live Music Every Friday & Saturday
Karaoke every Thursday
Open 7 Days A Week
Daily Happy Hour

9

HAMEL SNO-RUNNERS

Snowmobilers Invited
Meetings 1st Monday of each month
at Hamel American Legion
Trail rides on marked trails.
Organized Club Trips
P.O. Box 190
Hamel, MN 55340
email hamelsnorunners@aol.com

10

Ask about our program to stop smoking - Guaranteed!

CFH

CORCORAN HAMEL CHIROPRACTIC, PA
JAMES P. SEIM, D.C. DACBN
Diplomate American Clinical Board of Nutrition

20010 75th Avenue North
Corcoran, MN 55340
763.416.4878

\$70 DOT Physical Exams

11

Sundance
GOLF • BANQUET • BOWL

FULL BAR & MENU

Located between Osseo & Rogers on
County Rd 121/Farmbrook Ln, north of County Rd 81

(763) 420-4700
www.SundanceGolfBowl.com

12

WALDOCH Sports

FOREST LAKE, MN
651.464.5776

Shop 24/7 at: www.waldochsports.com

13

Corcoran Locker Catering

Retail Meats & Sausages
Homesmoked Hams & Bacon
Beef Sides & Quarters
Specializing in Pig Roasts
& Outdoor Barbecues
100-1000 friends
763-420-2555

14

Collision Masters

Auto Body & Mechanical

Repairing All Makes Since 1992

5111 Hanson Court
Crystal, MN 55429 **763-533-7491**

15

Epic Realty Craig Murphy

1922 1st Ave. S #202
Anoka, MN 55303 **(763)433-9133**
epicrealtync.com | cemurphy.com

16

AN AMERICAN BAR

MACKENZIE

24 CRAFT BEERS ON DRAFT
FULL MENU
DAILY LUNCH SPECIALS
SATTELLITE SPORTS COVERAGE

WITH A SCOTCH FLAVOR

MINNEAPOLIS
918 HENNEPIN AVE
MPLS 55403
612.333.5COT www.mackenziepub.com

17

A-1 Outdoor Power
763-420-2748

Sales | Parts | Service
Specializing in Commercial Mowers
Certified Techs • Delivery Available
www.a1outdoorpower.com
7630 Commerce St • Corcoran

ECHO **STIHL** **Simplicity**

18

Fowler Distributors

ATV & SNOW PARTS

ESTABLISHED 1953 • SINCE 1974

8054 Grand Ave. S.
Bloomington, MN 55420-3634
952-884-5401 • 800-843-1424 • FAX 952-884-3628

19

Banquets
Dinner
Lunch
Take Out

COUNTRY MANOR
DEHN'S

11281 Farmbrook Ln
Maple Grove
763-420-6460

20

Enhancing your life...

...that's what your cooperative is all about

Providing the local area with reliable, competitively priced energy, security and more!

Rockford, Minn.
763-477-3000
1-800-843-2887

Web: www.whe.org
E-mail: info@whe.org

21

TRI-K SPORTS

SNOWMOBILES
ATV'S
RANGER

PHONE: (763) 478-3727
FAX: (763) 478-3481

8000 Highway 52
Maple Grove, MN 55369

POLARIS

22

DITTER COOLING & HEATING

SINCE 1946

763-478-9558

Hamel, MN
www.ditterinc.com

23

BACKHOE,
BOBCAT,
WELDING &
DOZER

LOCATED IN CORCORAN

NEUMANN'S ENTERPRISE

763-420-2547

24

FARMERS
SINCE 1919

STATE BANK OF HAMEL

HAMEL OFFICE (763) 478-6611
CORCORAN OFFICE (763) 420-2025
145 HAMEL ROAD • P.O. BOX 236
HAMEL, MN 55340

25

12885 40th St
2 mi. East of St. Michael

MILLSIDE TAVERN

Liquor
Food

Best Burgers on the Crow River
St. Michael

763-497-2905

26

ANCHOR PAPER

WHOLESALE DISTRIBUTOR FOR PRINTING PAPERS, COPIER PAPERS, RECYCLED PAPERS AND PACKAGING MATERIALS, PACKAGING EQUIPMENT, SUPPLIES AND JANITORIAL SUPPLIES

(651) 298-1311 Office
(651) 298-1312 Customer Service
(800) 482-9735

480 Broadway, St. Paul, MN 56101

27

PRINTING

Printing
Graphic Design
Mailing Service
Bindery Copying

21310 John Millers Dr. • Rogers, MN 55374
Office: 763.428.2345 • Website: www.rpm.biz

28

(763) 493-5171

Gary Caspers
owner

Caspers Auto Repair

Foreign & Domestic Auto Repair

10650 County Rd. 31, Suite E
Maple Grove, MN 55369

29

MEDINA

Park 'n Ride
Acres of Free Parking!

• Robert's Restaurant, Patio & Bar
• Outside Catering
• Dancing Every Tues., Fri. & Sat.
• Cosmic Bowling
• Full Game Room
• Pull Tabs
• Happy Hour

Call 763-478-6661
For Tickets & Information
800 Hwy 55 • Medina, MN
www.medinaentertainment.com
THE MEDINA INN • 763-478-3770

30

"Something for everyone"

RIVER INN BAR & GRILL

11230 River Road N.E.
Hanover, MN 55341
Phone: 763-498-7333

Open 7 Days a Week
Full Service Bar & Grill

HANOVER

31

SNOW BUSINESS...

...AND YOUR BUSINESS

TRACK

www.trackinc.com
952.888.7372

32

Welcome!

The Lutheran Church Missouri Synod

St. John's Evangelical Lutheran Church & School

9141 County Rd 101
Maple Grove, MN 55311
Phone: 763-420-9426
Fax: 763-420-7198
www.stjohnsmg.org

Pastor Steven G. Brial
Pastor Matthew P. Johnson
Principal Gary L. Volberding

33

RBS LAWN CARE

Fertilization | Weed Control | Mowing
Trimming | Aeration | Clean Ups
Snow Plowing

P.O. Box 1146
Maple Grove, MN 55311
763-420-5526

34

HEINEN'S

763-425-2178
CHASSA, MN

ARCTIC CAT
SHARE OUR PASSION.™

35

HEINEN'S

Hours:
M-Th 9-7
Fri 9-6
Sat 10-6

763-425-2178
CHASSA, MN

YAMAHA

36

firewiz.com

Tires, Wheels & Accessories for the Power Sport Enthusiast
ATVs, Dirt Bikes, Street Bikes and Mini Trucks.

763-420-7151

37

R&W

WELDING
MACHINING
METAL FABRICATION

417 CO. 81 SERVICE RD
OSSEO, MN 55059
(763) 425-5221 • FAX (763) 425-9857

38

Family Owned & Operated since 1938

GV **BBB**

HEATING & AIR, INC.

5182 West Broadway | Crystal, Mn 55444
www.callGV.com **763-535-2000**

PREMIER DEALER **LENNOX** **AMANA** **Good Housekeeping**

39

Storman's
FOOD & FUEL

• Groceries • Gas • Fast Foods
• Propane • Ice
• Dairy • Snowmobile Oil
• Lotto • Pay at the Pump

763-498-8331

9350 County Rd. 19 | Corcoran/Loretto, MN 55357

40

POLARIS **AMATEUR** **Harris FishBoat** **TRITON**

DIGGERS POLARIS & MARINE

Prior Lake **952-440-8845** **www.diggerspolaris.com**
Victoria **952-443-3207**

41

Your Local Convenience Store

• Gas
• Ice
• ATM
• Food
• Lottery
• Propane
• Ice Cream
• Dehmer's Meat

NEW! **Bait &ackle**
Photo Kiosk
(next Day Pickup)

Hours:
Mon-Fri 5am-10pm
Sat: 6am-10pm
Sun: 7am-10pm
763-479-1511

4355 Hwy 55 Loretto/Medina, MN 55357

42

MOON motorsports

3613 Chassee Rd W - Monticello, MN
(763) 295-2920
www.moonmotorsports.com

POLARIS

Hours:
Mon & Tue: 8:30-5pm
Thu, Fri & Sat: 8:30-5pm
Saturday: 8:30-5pm

43

COMPLETE BOILER ROOM
SALES • PARTS • 24-HOUR SERVICE

PBBS

EQUIPMENT CORP.

3329 Mike Collins Dr • Eagan, MN 55121
651-686-7227 • 800-236-9742
www.pbbs.com

44

Premier
Wines & Spirits

Mark & Becky Doran
316 County Rd 81 • Osseo, MN 55369 • 763-425-4680